

STREAMLINE

News and Events at Louisville MSD

October 2019

OUR VISION

Achieving Safe, Clean Waterways
for a Healthy and Vibrant Community



MSD's Portland CSO Basin—situated underground in Lannan Memorial Park—is at work protecting the area and the Ohio River from sewer overflows. *Photo provided by LTM Drone*

MSD Portland CSO Basin is now in service

Underground storage is part of MSD's endeavor to prevent wastewater from overflowing into Louisville's waterways. The Portland Combined Sewer Overflow (CSO) Basin is the last basin contained in MSD's Consent Decree. Fourteen sewer overflow reduction facilities are now in service, providing a total storage capacity of 266 million gallons. These facilities protect our local waterways and public health and safety. MSD's Waterway Protection Tunnel, which is under construction, will add another 55 million gallons of storage capacity.

The MSD Portland CSO Basin sits under a restored grassy lawn in Lannan Memorial Park. When it rains, the basin is hard at work protecting the Ohio River and the neighborhood from combined sewer overflows.

Rainwater enters the combined sewer system through stormwater pipes and catch basins. This added water can overwhelm the sewer system, sending a combination of wastewater and rainwater into the Ohio River.



Construction was well underway in October 2018 on MSD's Portland CSO Basin. The basin is located between Interstate 64 and the Ohio River. *Photo provided by LTM Drone*

The Portland CSO Basin will capture and store 6.7 million gallons of wastewater and stormwater during rain events. The contents will gradually release back into the sewer system when treatment capacity is available. The mixture of rainwater and wastewater then flows through the sewer system to MSD's Morris Forman Water Quality Treatment Center for proper treatment and release into the Ohio River. When the basin is empty, water is flushed through the structure to clean any remaining debris.

—Continued on page 2



OUR MISSION

Provide quality wastewater, stormwater and flood protection services to protect public health and safety through sustainable solutions, fiscal stewardship and strategic partnerships

CUSTOMER RELATIONS

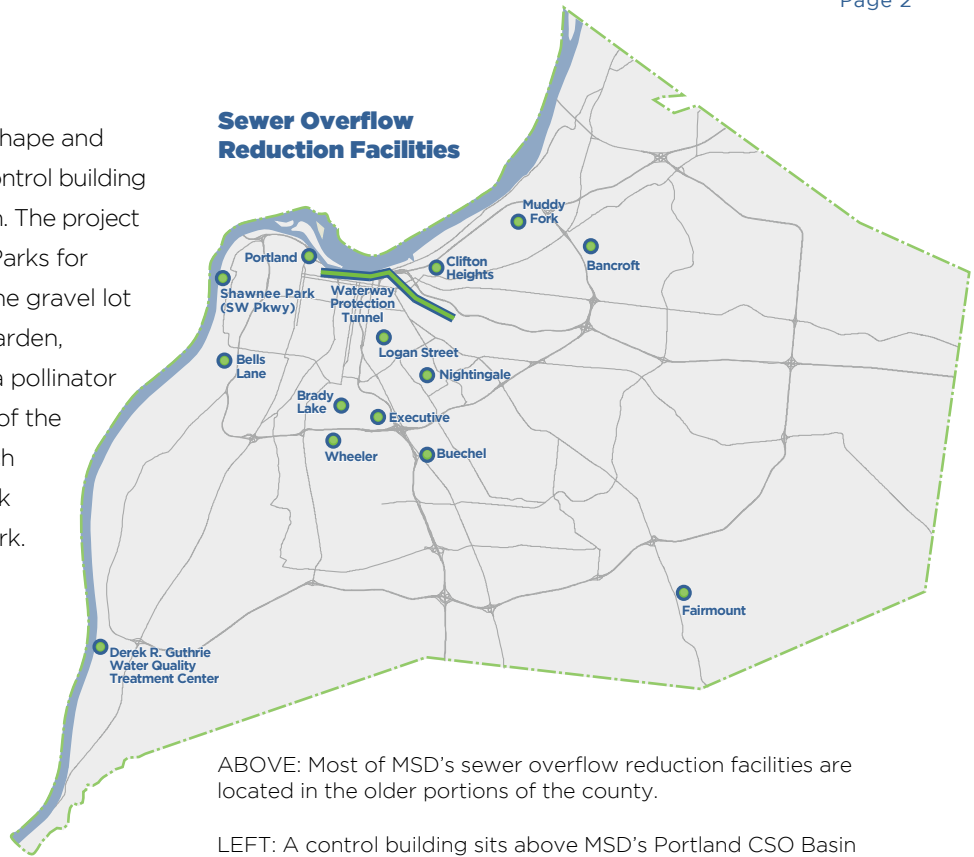
502.540.6000 · CustomerRelations@LouisvilleMSD.org



—Continued from page 1

Portland Basin

The Portland CSO Basin has a unique circular shape and is underground and invisible to the public. A control building and parking for MSD vehicles sit above the basin. The project replaced a gravel lot used by Louisville Metro Parks for storage. Surrounding and over the basin site, the gravel lot has been replaced by a grassy lawn and rain garden, which contains native plant species providing a pollinator habitat. Other amenities in the park as a result of the basin project are a newly paved roadway, which has curves added to slow traffic, and a sidewalk connecting Northwestern Parkway with the park.



ABOVE: Most of MSD’s sewer overflow reduction facilities are located in the older portions of the county.

LEFT: A control building sits above MSD’s Portland CSO Basin in Lannan Memorial Park.

Keep track of Louisville’s largest infrastructure project

MSD’s massive tunnel boring machine is carving through rock to build the Waterway Protection Tunnel. Nicknamed “Bumblebee”— in honor of Muhammad Ali—the 412-foot-long machine will bore a four-mile tunnel to store combined

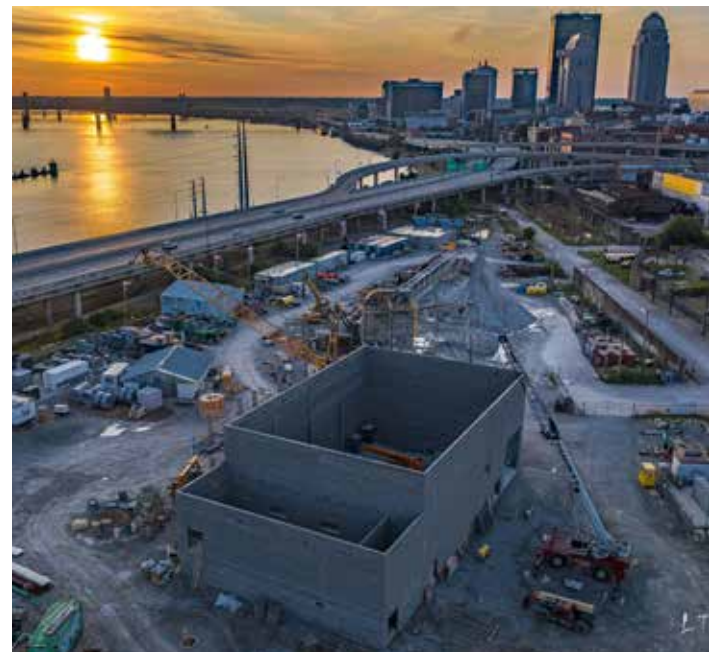
stormwater and wastewater to prevent it from overflowing sewers and polluting our river and streams.



To track the tunnel, visit LouisvilleMSD.org/Tunnel



Bumblebee is currently 18 stories under the area of North Brook and Witherspoon streets. The machine will continue east to Butchertown, eventually ending near Lexington Road and Grinstead Drive.



A control building rises above MSD’s Waterway Protection Tunnel entrance just west of downtown Louisville. The area surrounding the control building will become part of Waterfront Park Phase IV when the project is complete. *Photo provided by LTM Drone*

Building future water professionals

MSD represents at KY Construction Career Day

Pulaski County Area Technology Center student Andrew Stringer was content with his time during the MSD pipe-cutting contest. During the 15th annual Kentucky Construction Career Day at the Shelby County Fairgrounds, Stringer had sawed through the piece of pipe in about 10 seconds. The worst time among the group? That was Trey Hall. "It was about 25 seconds," Hall said, more than a little sheepish-sounding. His friends disagreed. "Nah, it was way longer than that," someone said, stirring everyone to laughter. After Hall's less-than-successful attempt at sawing, everyone gathered around to discuss the proper method to cut through the pipe before moving on to the next exhibit.

Career Day was sponsored by the Kentucky Construction Career Choice Council on Sept. 24-25. The event brought 2,700 vocational and technical students from across the commonwealth to the Shelby County Fairgrounds to learn more about making construction a career choice.

In addition to testing their efficiency in cutting pipe, students could also be lowered through a confined space entry display—replicating what MSD employees experience entering manholes. They could see how MSD monitors rainfall. And find out more about job opportunities with the agency.

Operations Efficiency and Capital Program Administrator **Troy Smith** organized MSD's participation in the event. He said he was encouraged by what he saw from students. "All I heard from the students were positive comments," Smith said. "There were two students who directly said to our employees, 'We want to come work for you.' That's the kind of thing we need to hear for building future water professionals."

Utility Leader **Tony Linton** was one of the MSD employees assisting students through the confined space unit. He said it was an effective way to show students a little of what workers do. "It's something that makes it fun," he said. "They're curious about exactly what we do as a utility, and they want to know more."

MSD employees who participated were: **Thomas Armistead, Rick Bledsoe, Glenn Busby, Glenn Eilers, Miriam Fisher, William Ford, Keith Gallai, Sandra Gibson, Leslie Graham, Zach Kilgore, Jimmy Krebs, Tony Linton, Nelson Little, Larry Marsh, Brandon McKenna, Tim Payton, Josh Pearson, Steve Robbins, Troy Smith, Kevin Snodgrass, John Stratman, Eric Toller, Christina Tomasulo, James Vaughan, Jakoby Warner** and **Keith Washington**.

Students attended from throughout the state, including Bullitt, Jefferson, Meade and Shelby counties.



MSD's confined space entry mobile unit provides students with experience in a pipe.



A student competes to cut through a pipe in a timed contest at Kentucky Construction Career Days.

Customer **Compliments**

I want to thank **Marya Summers** for taking my call concerning an odor issue. Ms. Summers is very personable and her customer service skills are awesome.

— Mary Gilbert

Sherry Peters provided great customer service when anything that could go wrong...did with the repair at my home. She was willing to work hard to solve the issues.

— Christi Johns



700 West Liberty Street
Louisville, KY 40203-1911



Streamline is a publication of Louisville MSD.
© COPYRIGHT 2019
LOJIC map data copyrighted by the Louisville
and Jefferson County Metropolitan Sewer District,
Louisville Water Company, Louisville Metro
Government and Jefferson County Property
Valuation Administrator. All rights reserved.

Editor:
Sheryl Lauder
Communications Program Manager
Sheryl.Lauder@LouisvilleMSD.org

Contributor:
Chad Williamson
Communications Specialist

The public is welcome to attend MSD Board meetings.
For MSD Board information and meeting schedule visit:
LouisvilleMSD.org/About-Us/MSD-Board

Upcoming Events

OCTOBER 15
MSD Audit Committee Meeting
4 PM, 700 West Liberty Street

OCTOBER 28
MSD Board Meeting
1 PM, Open Session, 700 West Liberty Street



Floyds Fork

MSD wins NACWA Peak Performance Awards

Peak Performance Awards recognize the NACWA (National Association of Clean Water Agency) facilities for excellence in permit compliance.

Platinum Award

MSD's Cedar Creek Water Quality Treatment Center was recognized with a Platinum Award for 11 consecutive years with no regulatory violations. Platinum Awards go to facilities with a consistent record of full compliance for at least five straight years.

Gold Award

MSD's Hite Creek Water Quality Treatment Center staff brought home a Gold Award for no violations in the last 12 months.

Silver Award

MSD's Derek R. Guthrie and Floyds Fork Water Quality Treatment Centers took home silver awards—recognizing no more than five violations in the past 12 months.

Congratulations to MSD Water Quality Treatment staff!