

STREAMLINE

News and Events at Louisville MSD

April 2018

OUR VISION

Achieving Safe, Clean Waterways
for a Healthy and Vibrant Community

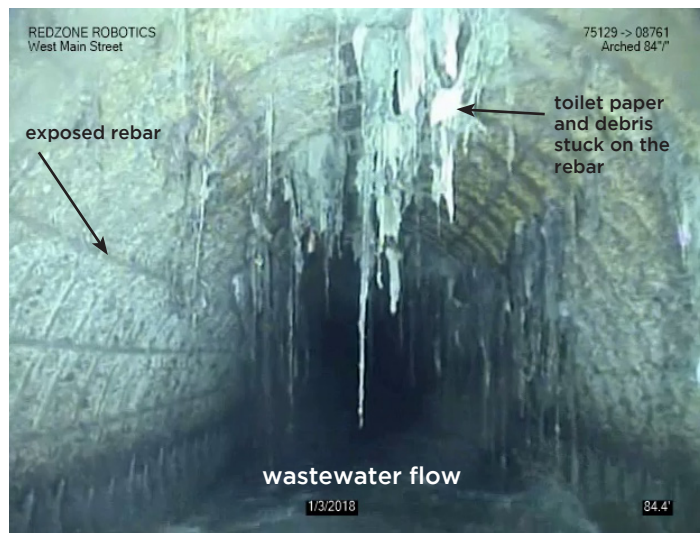
Major sewer pipe on Main Street requires repair— traffic closures

MSD is working with a consultant on a repair plan for a 60-year-old pipe between Fourth and Seventh streets

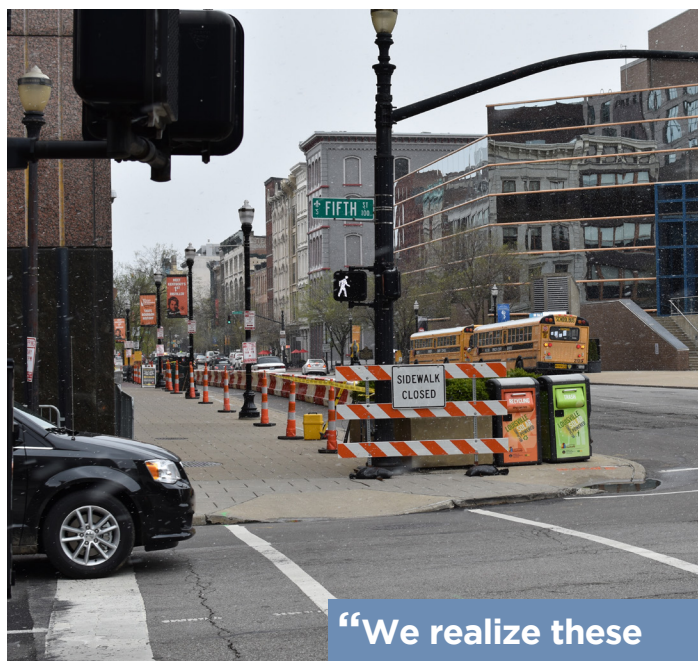
The south side parking lane and four-feet of sidewalk on Main Street between Fourth and Seventh streets is closed to traffic and pedestrians in an effort to ensure public safety. MSD discovered damage to a major sewer pipe that runs under that section of the roadway.

The damaged 84-inch diameter sewer pipe, which is about 60 years old, carries approximately 40 percent of the wastewater flow generated in Louisville Metro. This pipe runs under the south side parking lane on Main Street, between Fourth and Seventh streets. Experts are concerned that corrosion caused by sewer gases in the pipe could lead to a cave-in in that area.

MSD commissioned an inspection of this pipe — called the Ohio River Interceptor — in November 2017, and used technology that allows engineers to analyze the pipe without having to empty it. The resulting March 1, 2018, report revealed that some of the concrete and rebar pipe was wearing away,



This photo shows the condition of a large sewer pipe directly under the parking lane on West Main Street near Fifth Street.



The south side parking lane and portion of the sidewalk on West Main Street between Fourth and Seventh is closed due to the condition of a large sewer pipe directly under this area.

especially in the section of the sewer main between Fourth and Fifth streets.

MSD then asked two additional outside engineering firms, with experts in large sewer pipe rehabilitation, to independently review the inspection report. Both firms confirmed the damage and potential risks of the pipe, and expanded the area of urgency to include Fourth to Seventh streets.

MSD is working with consultants on repair options and timelines, while also working closely with other utilities

Continued on page 2

“We realize these closures are disruptive, and do not make this decision lightly . . . public safety clearly must be our top priority.”

— MSD Executive Director
Tony Parrott



OUR MISSION

Providing Exceptional Wastewater, Drainage
and Flood Protection Services for Our Community

24/7/365

502.587.0603 · CustomerRelations@LouisvilleMSD.org



LouisvilleMSD

Main Street sewer pipe... continued from page 1

and Louisville Metro government to evaluate any other risks and ensure public safety. Until the repairs are complete, the south side parking lane and about four-feet of sidewalk between Fourth and Seventh streets will remain closed. MSD is monitoring the area on a daily basis for any signs of collapse. The closures reflect safety concerns by both MSD and Louisville Metro government. "We realize these closures are disruptive, and do not make this decision lightly, as this area is the heart of our city's business, entertainment and tourism districts," says MSD Executive Director Tony Parrott. "However, public safety clearly must be our top priority."

Previous collapse of this pipe

The Ohio River Interceptor runs under Main Street from the Butchertown area in the East to I-264 in the West End. The section between Fourth and Seventh streets is part of the same pipe that caved in on Main and Hancock streets in late August 2017.



On August 30, 2017, a section of roadway on East Main Street at Hancock caved-in due to a failure in the Ohio River Interceptor pipe. This is the same pipe that is in danger of a cave-in on West Main between Fourth and Seventh streets.

The Ohio River Interceptor is one of the hundreds of projects identified in MSD's Critical Repair & Reinvestment Plan, which includes funding to rehabilitate major sewer lines within the service area.

Visit: LouisvilleMSD.org/CriticalRepairPlan

River to River...new education program explores the water cycle

Thirty St. Francis School sixth graders were the first students to participate in a new education program offered this month by Louisville Water Company and Louisville MSD. "River to River" is a program that explores our area's water cycle and why it stays in motion.

Science teacher Jason Chlopek said it was an engaging hands-on experience that helped his students make "larger connections" to lessons they have learned in his classroom.

"River to River" is a free in-class program that explores Louisville's complete water cycle. It is part of the One Water effort to share resources between Louisville Water and Louisville MSD — so it made sense to create an education program that tells the story of both utilities. Other free lessons are available that align to standards in science, social studies, practical living, math and literacy.

"Louisville Water and Louisville MSD work closely with one of our most important natural resources," noted Channa Newman, Louisville Water Education and Outreach Manager. "Each day millions of gallons of Ohio River water are treated



Students learn about Louisville's water cycle through hands-on activities.

and supplied to the city of Louisville — and then treated again and returned to the river." Newman also noted that "the lesson is hands-on, content-driven and connects to the real world." Through activities involving a range of water pitchers, cups, and other containers, students learn how water is drawn from the Ohio River and then treated and distributed throughout the area. Additional activities then illustrate how wastewater and stormwater are collected and treated before return to our local streams or the Ohio River.

Available for grades 5-8, River to River is designed to be taught in one classroom period, approximately 60 minutes.

For more information, educators are encouraged to contact educationprograms@lwcky.com or 502.569.3600 x2436.



The Ohio River stretches across River Road, under I-64 and the Bevelvedere, once again in early April.

Rain, and more rain...again

MSD Flood Protection staff were in the midst of inspecting and evaluating the flood protection system from the February/March flooding when the rising waters in early April once again demanded their attention. Eleven of MSD's 16 flood pumping stations were put back into service, and extra staff was called to duty for round-the-clock monitoring of those stations.

Damage from the previous flood

Some pumping stations experienced damage in the February/March flooding event. Each of MSD's flood pumping stations has multiple pumps and process gates. Luckily, this second flooding event was not as severe as the earlier one, and the stations were able to handle this latest round of high water even with damaged equipment.

Ten of the 16 flood pumping stations experienced damage in the February/March flooding event. The system had a total of five pump failures and multiple process gate and motor control failures. The assessment and repair work is ongoing.

MSD Flood Protection staff work year-round to maintain these flood pumping stations, 150 floodgates, and 29-miles of floodwall and earthen levee. Nine MSD pump stations are 70 years old and were built when Louisville had much less impervious surface.

Customer **Compliments**

Thank you to **Caleb Deerr** and **Kurtis Manley**, and their supervisor **Glen Cooper**. They did a great job clearing the ditch near my home. They were very polite, as well. Thanks to all for the quick response.

— Ron Barker

I want to let MSD know what a wonderful job **Ron Henderson** and **Lanita Grimes** did in getting sewer service to my mother's home. Ron went above and beyond, and Lanita was always so quick to get back to me. In a world where your staff probably gets more complaints than praise — I want to thank you. The MSD staff rocks!

— Scarlett Mattingly

Marya Summers did a fantastic job explaining my bill to me. After she went over my bill with me, she was pretty sure that I had a water leak. She carefully explained what I needed to do. She is awesome!

— Rhonda Karageorge



Plant your rain garden now

Rain gardens help infiltrate rainwater before it reaches the drainage system, and reduce the amount of stormwater and pollutants running into storm drains, combined sewers or streams. For your **FREE Rain Garden Guide**, contact MSD Customer Relations at **502.587.0603**, or online at **CustomerRelations@LouisvilleMSD.org**.

**MSD is available 24/7
at 502.587.0603**

**Report a sanitary sewer backup
before contacting a plumber.
Determining if the problem is located
on the public side of the system
will help to avoid unnecessary plumber expense.**



700 West Liberty Street
Louisville, KY 40203-1911



StreamLine is a publication of Louisville MSD.

© COPYRIGHT 2018

LOJIC map data copyrighted by the Louisville and Jefferson County Metropolitan Sewer District, Louisville Water Company, Louisville Metro Government and Jefferson County Property Valuation Administrator. All rights reserved.

Editor:

Sheryl Lauder
Communications Program Manager
Sheryl.Lauder@LouisvilleMSD.org

Contributor:

Chad Williamson
Communications Specialist

MSD Board information:

You can find information about
MSD Board actions on our website,
msdrecords.LouisvilleMSD.org

The public is welcome to attend MSD Board meetings.

Access <http://msdrecords.louisvillemsd.org/openmsd/board.aspx> for the full schedule of both regular and Board committee meetings.

MSD STREAMLINE · April 2018

Page 4

Upcoming **Events**

APRIL 18

MSD Joint Infrastructure & Finance Committees Meeting
3 PM, Open Session, 700 West Liberty Street

APRIL 23

MSD Board Meeting
1 PM, Open Session, 700 West Liberty Street

APRIL 28

How to Do Business with MSD
9 AM, 700 West Liberty Street

MAY 29

MSD Board Meeting
1 PM, Open Session, 700 West Liberty Street



Loose branches collect in a tree after high-water in this floodplain near the confluence of Beargrass Creek and the Ohio River. — Photo courtesy of John Nation.

Volunteer and make a difference!

Ohio River Sweep

Saturday, June 16 • 9 AM to Noon



MSD proudly sponsors Ohio River Sweep with ORSANCO, LG&E and Louisville Water. The event is one of the nation's largest and longest-running environmental cleanup events.

MSD employees will equip volunteers with gloves and bags. For location information visit:

LouisvilleMSD.org/OhioRiverSweep