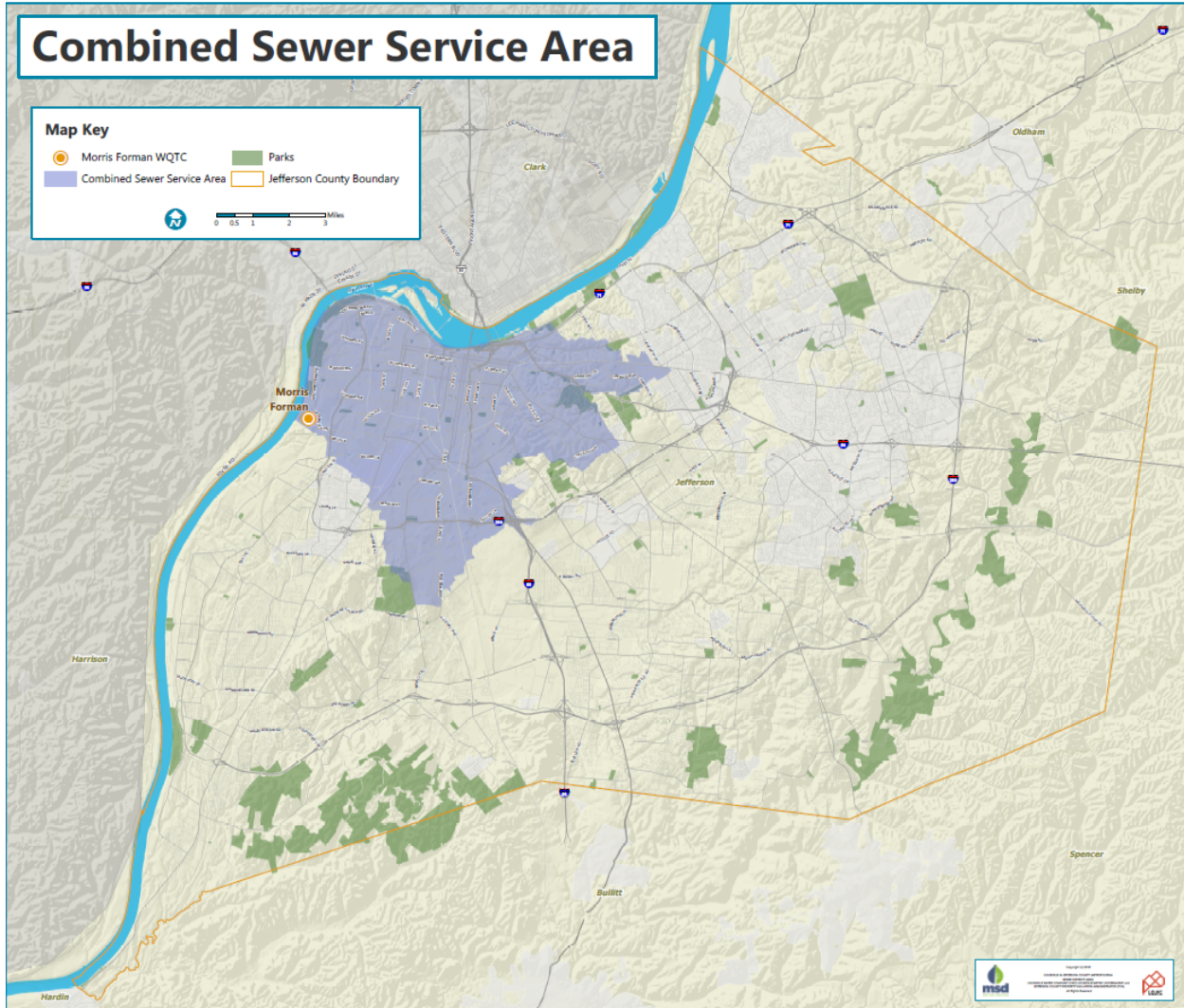


MSD crews perform several vital functions throughout the combined sewer area to help mitigate odors that could occur in the sewer lines.

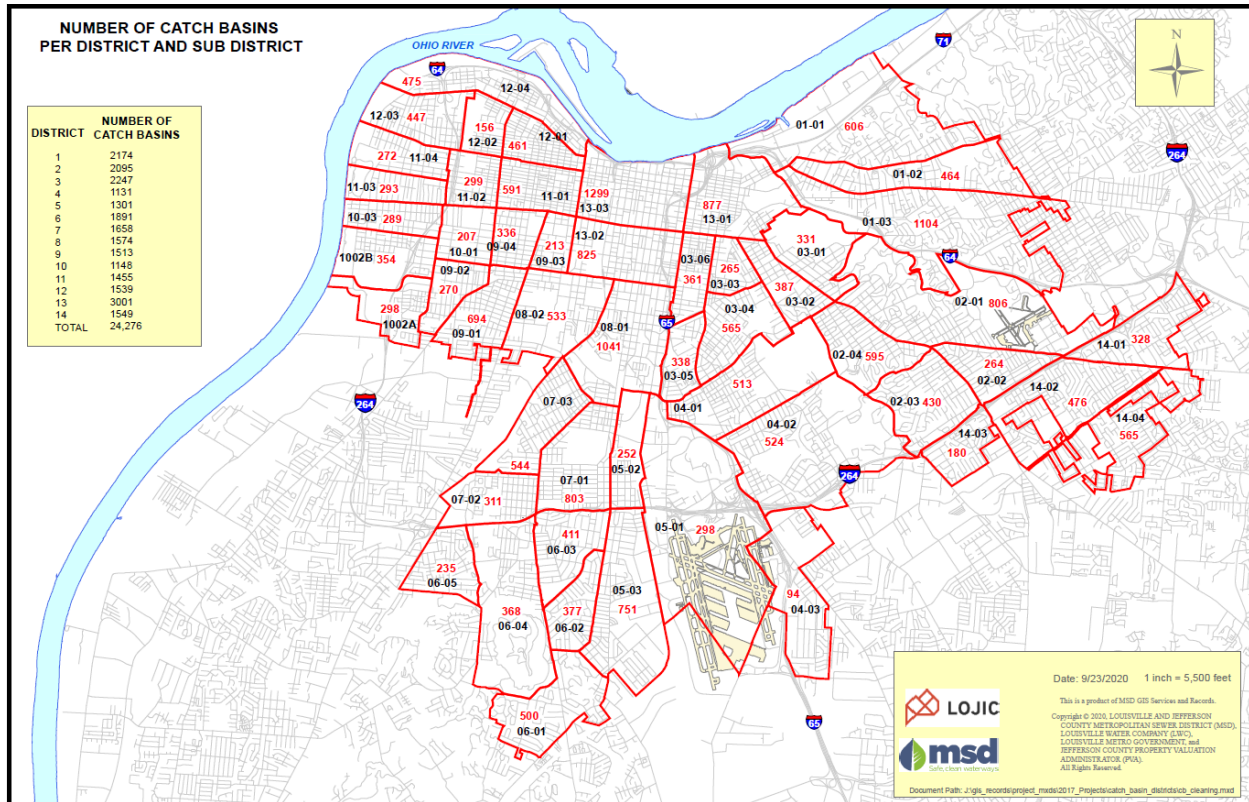
Catch Basin Cleaning

MSD currently maintains over 24,000 catch basins in the Combined Sewer Service Area.



Catch Basins are used to drain storm water runoff from the streets during rain events. When these catch basins were constructed, it was standard practice to connect the catch basin drains to the sanitary sewer pipes from homes and businesses. Catch Basins typically have drain traps similar to the trap under a kitchen sink. These drain traps are designed to keep gases from backing into homes. The Catch Basin traps can dry out due to lack of rain, debris accumulation or even damage. If this occurs the gases from the sewer pipe can escape from the catch basin into the surrounding environment.

MSD employees trained technicians with special equipment to inspect and clean each Catch Basin. The Catch Basins are divided into 14 Districts.



During the cleaning process the crews will remove any debris accumulation, flush with clean water and inspect for any damage. If the crew determines the catch basin is damaged in any way a workorder will be issued for repair.

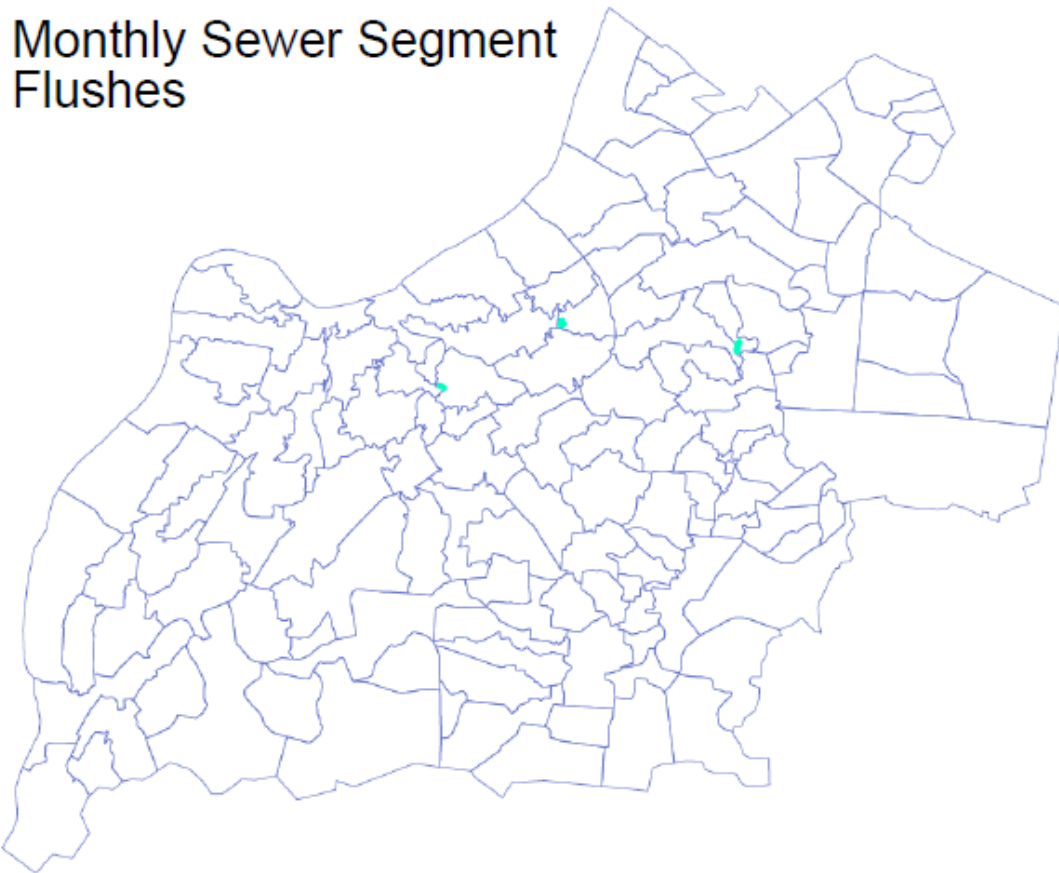
MSD never stops cleaning Catch Basins. As soon as work is complete in a district the cleaning moves to the next district until all fourteen districts are complete. Then cleaning starts over again in District One. The entire process typically takes 18 months.

Hydraulic Sewer Line Flush

MSD has identified several areas of the collection system that require routine sewer flushes on cleanouts and main lines throughout the city. Routine cleaning on either a monthly or quarterly basis help keep debris, fats, oils, and greases from accumulating in the sewer line that could contribute to sewer backups and fugitive odors.

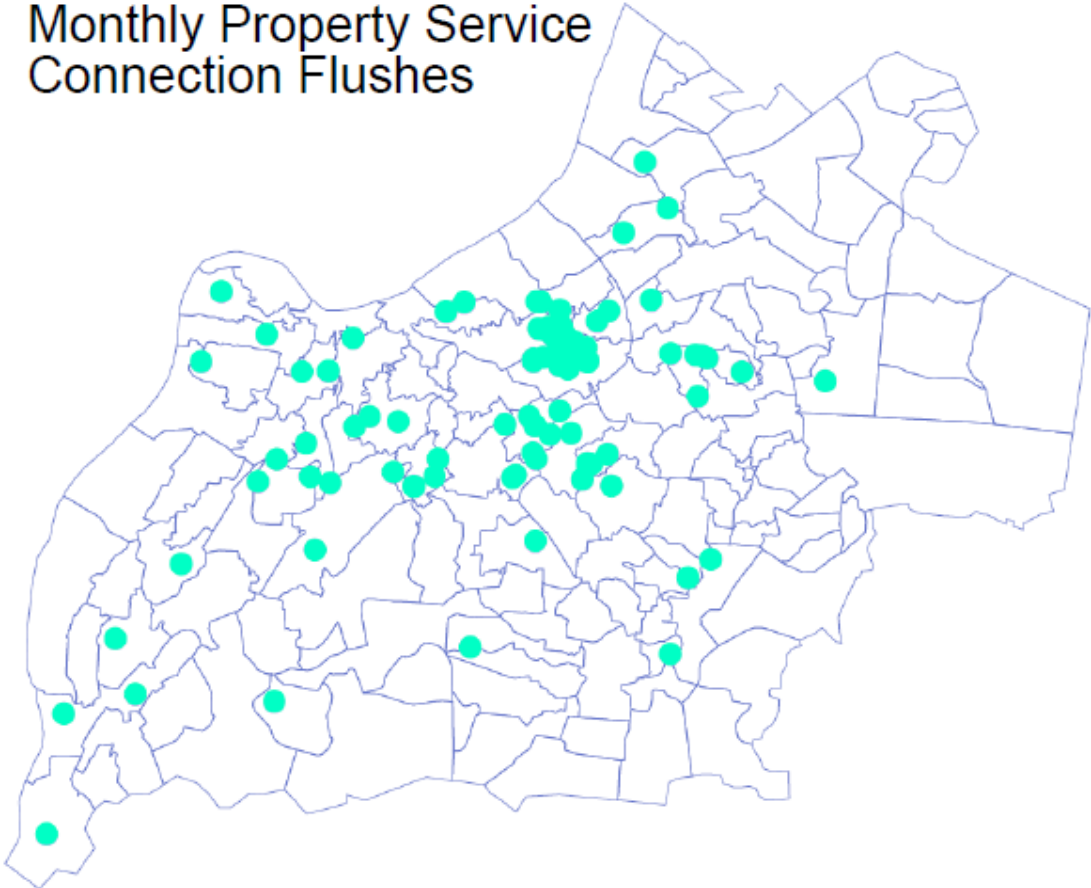
Monthly Maintenance

Each month the sewer lines highlighted in the map below are flushed:



The property service connections highlighted on the map below are flushed monthly:

Monthly Property Service Connection Flushes



Quarterly Maintenance

Each quarter the sewer lines highlighted on the map below are flushed:

Quarterly Sewer Segment Flushes

