



June 22, 2023

Mr. Russ Neal
 Kentucky Division of Water
 300 Sower Boulevard
 Frankfort, KY 40601

Re: Louisville & Jefferson County Metropolitan Sewer District (MSD)
 Derek R. Guthrie (DRG) Water Quality Treatment Center (WQTC) Regional Facilities Plan

Dear Russ,

In 2017, MSD authored a Regional Wastewater Facilities Plan (2017 Facilities Plan) for the DRG WQTC system. The Facilities Plan was approved by the Kentucky Division of Water on March 23, 2020. MSD proposes to amend the Planning Area from the approved 2017 Facilities Plan to add a small service area within Bullitt County.

Strand Associates, Inc.® (Strand) has enclosed a copy of Figure 1-1 from the 2017 Facilities Plan showing the approved Planning Area for its DRG Plan. Also enclosed is a revised Figure 1-1 to show the new Planning Area.

MSD took over the assets of the Bullitt County Sanitation District in 2021. As part of that acquisition, MSD has found it more cost-effective to serve the former Hunters Hollow Wastewater Treatment Plant (WWTP) service area, the current Bullitt Hills WWTP, and Hillview Nos. 1 and 2 WWTP service areas at the DRG WQTC. The requested change in the Planning Area boundary will add these areas to the DRG Planning Area.

The additional flow from these service areas will add approximately 1.2 million gallons per day (MGD) of additional wastewater to the DRG WQTC, as shown in Table 1.

WWTP Name	Design Flow (MGD)	KPDES Permit No.
Bullitt Hills	0.350	KY0034801
Hillview No. 1	0.231	KY0034151
Hillview No. 2	0.320	KY0034169
Former Hunter's Hollow	0.25+/-	N/A

Table 1 Additional Flow to the DRG WQTC

This additional volume is minor compared to the 60 MGD rated capacity of DRG WQTC. The DRG WQTC is currently treating an annual average flow of approximately 37 MGD (refer to Table 2). The DRG WQTC has available capacity to treat this additional flow.

Mr. Russ Neal
 Kentucky Division of Water
 Page 2
 June 22, 2023

Month	DRG WQTC Effluent Flow (MGD)	
	2021	2022
January	59.11	62.47
February	57.84	79.71
March	57.02	43.86
April	33.14	38.55
May	32.30	27.01
June	28.25	25.88
July	30.20	26.89
August	22.22	28.22
September	34.74	22.97
October	31.63	19.67
November	25.93	22.27
December	35.79	31.06
Annual Average	37.35	35.72

Table 2 Current Annual Average Flow

This flow will be conveyed from Bullitt County to DRG WQTC via MSD's Mud Lane and Pond Creek Interceptors. The DRG collection system has the capacity to convey the additional peak flow of approximately 5.0 MGD to the DRG WQTC.

MSD is preparing a Lower Floyds Fork Regional Wastewater Facility Plan. The plan will include some details on the Bullitt County area to be served by the DRG WQTC and the new Lower Floyds Fork Planning Area will exclude the proposed DRG planning area of Bullitt County.

While MSD has owned and operated these facilities since 2021, they are not included in a Regional Wastewater Planning Area, in accordance with 401 KAR 5:006. As such, Strand has enclosed a letter from the Bullitt County Judge-Executive endorsing the boundary change for the Planning Area.

Strand can provide the shape files for the updated Planning Area. Please advise on the next steps in amending the Planning Area for the DRG WQTC Regional Facilities Plan.

If you have any questions, please call 502-583-7020.

Sincerely,

STRAND ASSOCIATES, INC.®












Mark A. Sneve, P.E., BCEE

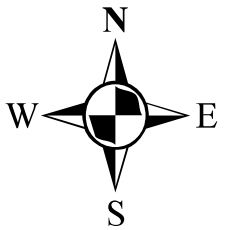
c/enc: Wolffie Miller, P.E., Louisville & Jefferson County Metropolitan Sewer District
 David Johnson, P.E., Louisville & Jefferson County Metropolitan Sewer District

Figure: 1-1

DEREK R. GUTHRIE FACILITIES PLAN UPDATE
LOUISVILLE AND JEFFERSON COUNTY
METROPOLITAN SEWER DISTRICT

PLANNING AREA
LOCATION

-  MSD Regional Treatment Plant
-  MSD Treatment Plant
-  Private Treatment Plant
-  Streams
-  Expressway
-  Major Roads
-  Jefferson County Boundary
-  Pond Creek Watershed
-  Mill Creek Watershed
-  Currently Not Serviced
-  Planning Area Boundary



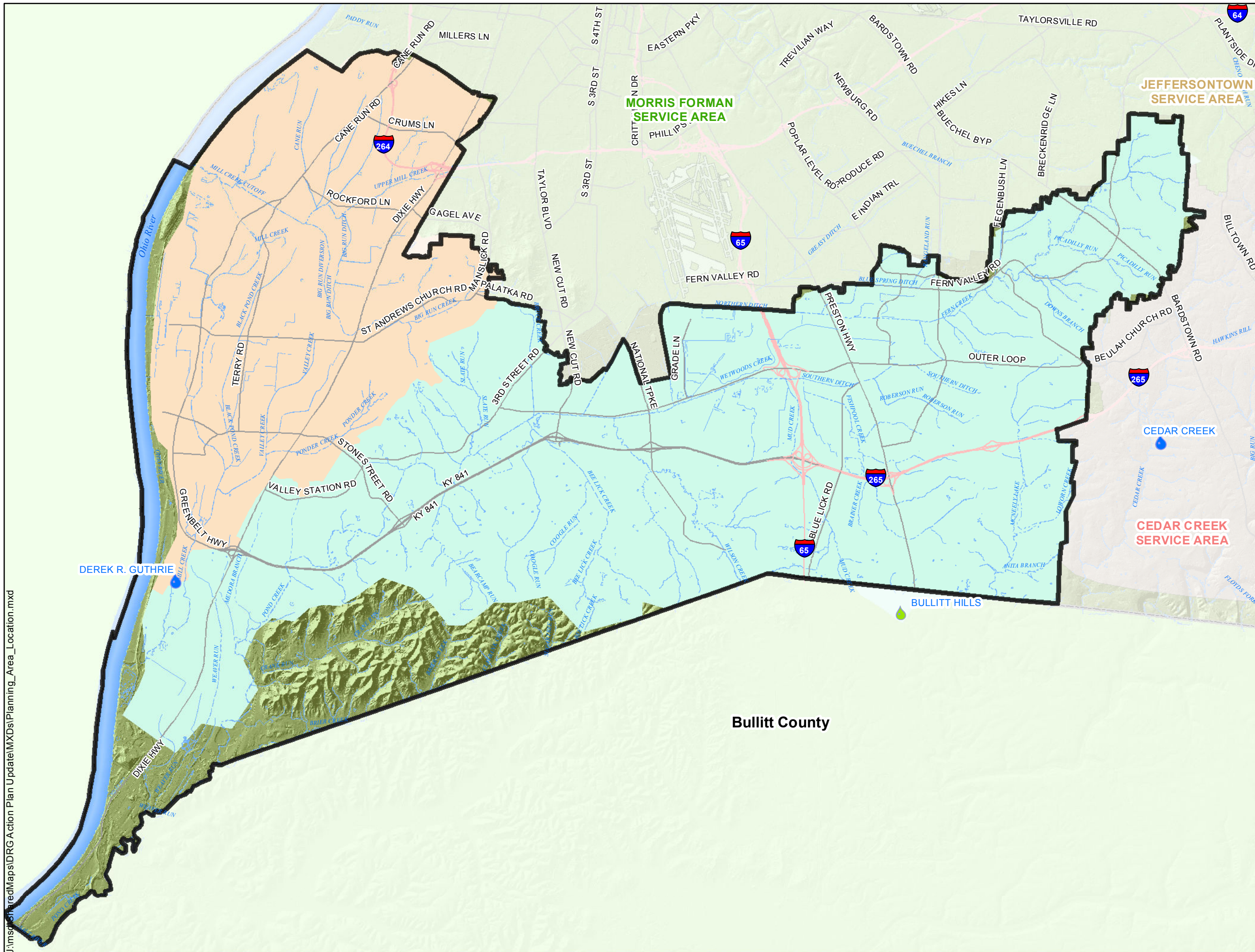
0 0.75 1.5 Miles
1 inch equals 1.5 miles



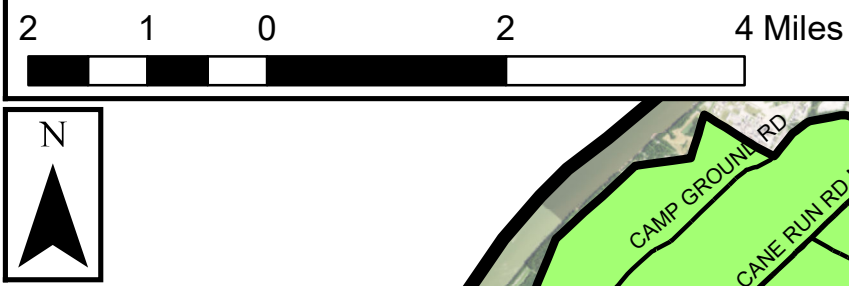
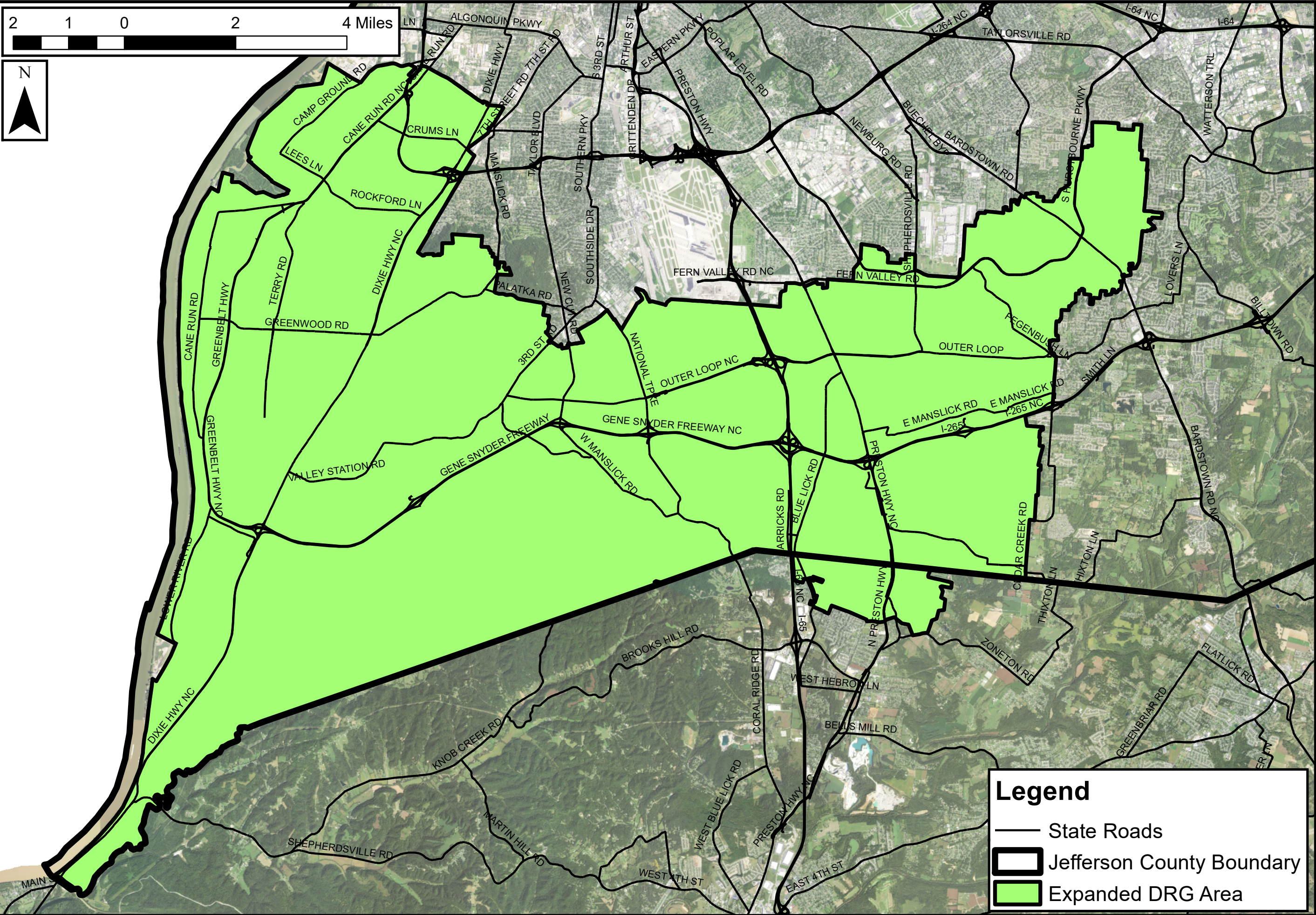
Copyright (c) 2017, LOUISVILLE AND JEFFERSON COUNTY METROPOLITAN SEWER DISTRICT (MSD), LOUISVILLE WATER COMPANY (LWC), LOUISVILLE METRO GOVERNMENT, and JEFFERSON COUNTY PROPERTY VALUATION ADMINISTRATOR (PVA). All Rights Reserved.

Map Prepared by MSD GIS Services and Records

Map Created: 7-APR-2017



J:\msd\shared\maps\DRG Action Plan Update\MXD\Planning_Area_Location.mxd



EXPANDED DEREK R. GUTHRIE PLANNING AREA

LOUISVILLE AND JEFFERSON COUNTY MSD

MAY 2023

Legend




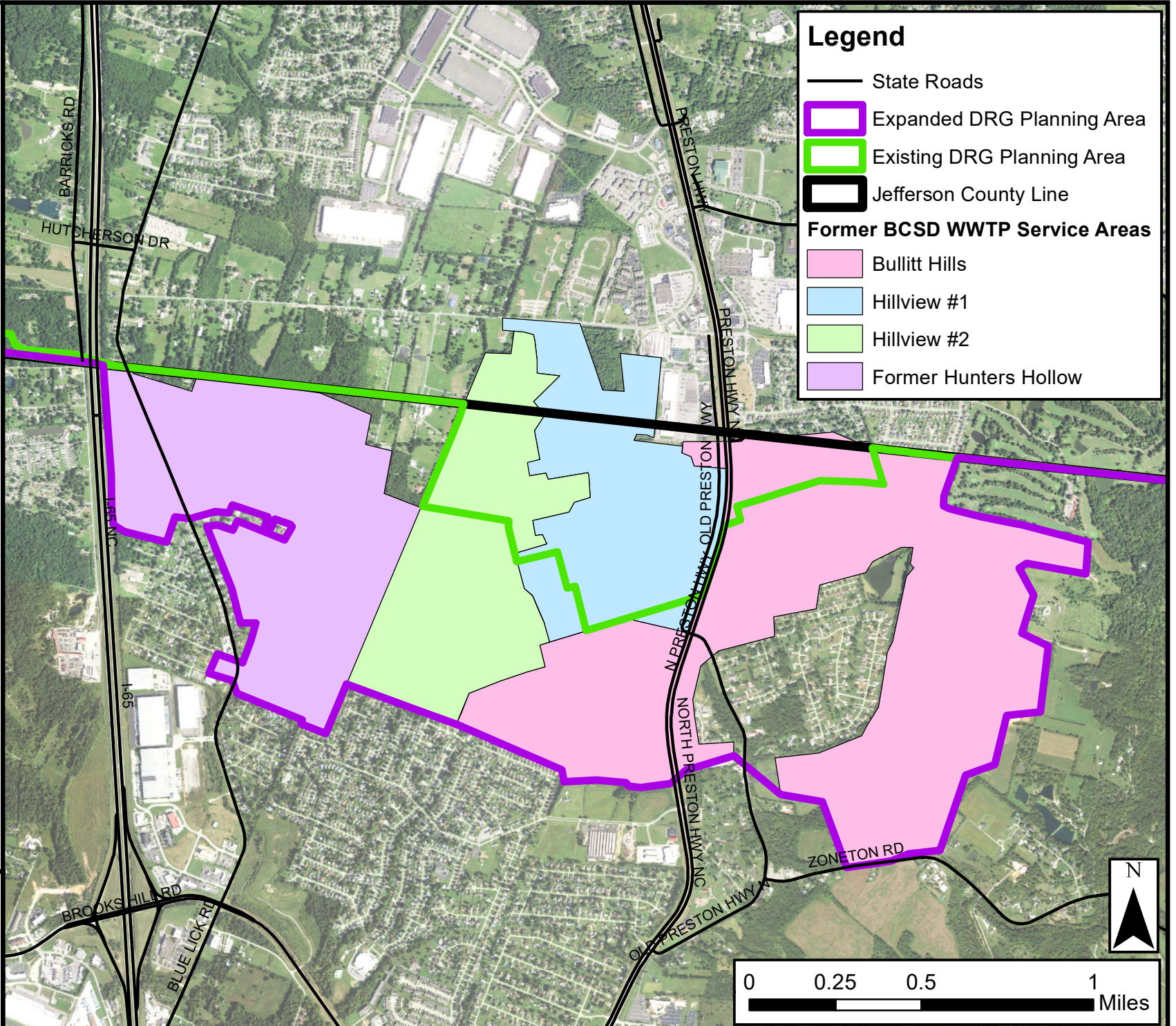
-  State Roads
-  Jefferson County Boundary
-  Expanded DRG Area



FIGURE 3
5922.132



Legend

- State Roads
- Expanded DRG Planning Area
- Existing DRG Planning Area
- Jefferson County Line
- Former BCSD WWTW Service Areas**
- Bullitt Hills
- Hillview #1
- Hillview #2
- Former Hunters Hollow

**BULLITT COUNTY WWTW SERVICE AREAS
TO BE ADDED TO THE DRG WQTC PLANNING AREA**

LOUISVILLE AND JEFFERSON COUNTY MSD
MAY 2023

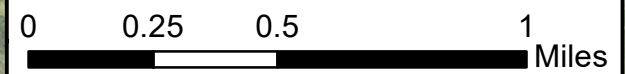


FIGURE 2
5922.132

**JERRY SUMMERS
BULLITT COUNTY JUDGE EXECUTIVE**



May 26, 2023

Mr. Russ Neal
Kentucky Division of Water
300 Sower Blvd
Frankfort, Kentucky 40601

Re: Louisville & Jefferson County MSD (MSD)
Derek R. Guthrie (DRG) Water Quality Treatment Center (WQTC) Regional Facilities
Plan
Change in Planning Area within Bullitt County

Dear Mr. Neal:

The Bullitt County Fiscal Court endorses the change to the MSD's DRG WQTC Planning Area within Bullitt County. The specific areas of Bullitt County to be included within the DRG Planning Area are shown in the attached figure and include the former Hunters Hollow WWTP service area, the current Bullitt Hills WWTP, Hillview #1 WWTP, and Hillview #2 WWTP service areas.

We appreciate MSD's improvement to our sewer service in the northern part of our County.

Sincerely,

A handwritten signature in blue ink that reads "Jerry Summers".

Jerry Summers
Bullitt County Judge-Executive

Enclosure - Bullitt County portion of MSD DRG WQTC Expanded Planning Area

c: Tony Parrott, Louisville and Jefferson County MSD
David Johnson, P.E., Louisville and Jefferson County MSD

Initials\C:\Users\crenfrow\AppData\Local\Microsoft\Windows\INetCache\Content.Outlook\THGDO6P2\DRG Planning Area letter draft for BCJE.docx

P.O. Box 768 • 300 South Buckman Street • Shepherdsville, Kentucky 40165
(502) 543-2262 • Fax (502) 543-1577 • jsummers@bullittky.com