

# Can You Dig IT 2025

**Rene' Lindsay, Chief Procurement Officer**

**January 16, 2025**



# Event Agenda

## 9:45 Registration, Coffee and Networking

MBE/WBE firms please visit the Pavilion Lobby to network with interested prime contractors

**11:00 Welcome:** Rene´ Lindsay – MSD Chief Procurement Officer

## **11:05 Keynote Speakers**

- Tony Parrott – MSD Executive Director
- Rene´ Lindsay – MSD Chief Procurement Officer
- John Loechle – MSD Engineering Technical Services Director
- Larry Bryant – Louisville Water Vice President and Chief Engineer

**11:50 Closing Remarks:** Rene´ Lindsay - Chief Procurement Officer

**12:00 Event Ends**

# Welcome to Can you Dig it 2025



# Tony Parrott

## MSD Executive Director





# MSD 5-year historical spend with MBE/WBEs

- 5-year spend with Minority and Women Business Enterprises  
– **\$132 million**



# Acknowledgements

MSD extends our appreciation and gratitude to exhibitors and contractors:

- Louisville Water Company
- Louisville Metro Government
- Louisville Gas & Electric (PPL)
- Women's Business Enterprise National Council (WBENC)- ORV
- SBA
- One West
- Builders Exchange
- Stock Yards Bank
- Republic Bank
- Dugan & Meyers
- Garney Companies, Inc.
- Thieneman Construction
- Ulliman Schutte Construction
- Walsh Construction Company

# Equity in Contracting & Procurement Taskforce

## Task Force Members

- Louisville Water Company
- Louisville Regional Airport Authority
- Louisville Metro Housing Authority
- Louisville Metro Government
- Louisville Metro Council
- Jefferson County Public Schools
- University of Louisville
- Kentucky Transportation Cabinet
- Transit Authority of River City
- Louisville Urban League
- One West
- Kentuckiana Works
- Greater Louisville Inc.



# Training Opportunities to Overcome Barriers

MSD recognizes challenges and barriers contractors face when they begin the administrative process of working with MSD

- We are working to close this gap as we want companies to be successful in working with us
- MSD is working with a variety of businesses to provide bid training & guidance on how to:
  - Bid on work with MSD
  - Completing the MBE/WBE Program Documentation
  - Completing pay applications
  - Change order process
- We would like to hear **your feedback** on other topics you would like to receive training



# Program Updates

## E-Procurement - All Bidding Activities

- Bonfire
  - MSD has transitioned bidding processes to an electronic platform
  - Register w/Bonfire for bid notification
  - Training is available through Bonfire

# Program Updates


## Supplier Diversity – MBE/WBE Program Documentation


- MBE/WBE Goal Compliance Form
- MBE/WBE Data Sheets
- Supplier Diversity Training - Virtual
  - January 29, 2025 @ 9:00 am
  - February 4, 2025 @ 9:00 am
  - February 6, 2025 @ 1:00 pm
  - February 14, 2025 @ 9:00 am

Register: [supplierdiversity@louisvillemsd.org](mailto:supplierdiversity@louisvillemsd.org)

# MBE & WBE Subcontractor Participation

Table 2. MBE/WBE Subcontract Construction Goals (Ethnicity and Gender)			
Contract Value: \$200,000 <small>(as determined by MSD)</small>	African Americans	Asian Indian Americans	Caucasian Females
	18.0%	2.0%	15.0%

**20.0% MBE**

**15.0% WBE**

**35.0%** MBE/WBE construction subcontract goal

(3) *separate goals*, based on ethnicity & gender for eligible MBE/WBE subs

## Anticipated Construction Investment by Fiscal Year and Project Type

Service Type / Program	FY2025	FY2026	FY2027	FY2028	FY2029	Totals
<b>Wastewater</b>	\$165.2	\$182.2	\$149.3	\$141.8	\$148.5	\$787.0
Asset Management	\$0.5	\$0.5	\$0.1	\$0.1	\$0.1	\$1.1
CMOM	\$3.5	\$3.6	\$3.6	\$4.5	\$4.6	\$19.7
Collection System	\$16.9	\$29.8	\$34.3	\$46.9	\$74.1	\$202.1
Consent Decree - \$25 M Asset Management	\$0.6	\$0.7	\$0.0	\$0.0	\$0.0	\$1.2
Consent Decree - Critical Sewer Projects	\$1.6	\$2.8	\$8.4	\$11.0	\$11.2	\$35.2
Consent Decree - LTCP/SSDP/Remedial Projects	\$1.6	\$5.7	\$3.7	\$0.0	\$0.0	\$11.0
Nine Minimum Controls	\$0.4	\$0.6	\$0.3	\$0.2	\$0.2	\$1.7
Plant and Pump Station	\$134.2	\$136.6	\$95.0	\$67.9	\$24.8	\$458.4
Regionalization/Development	\$2.0	\$1.7	\$1.3	\$0.7	\$0.1	\$5.7
Sewer Rehabilitation	\$3.9	\$0.3	\$2.7	\$10.5	\$33.5	\$50.9
<b>Stormwater</b>	\$91.3	\$92.4	\$31.8	\$35.8	\$19.3	\$270.6
Drainage	\$7.9	\$7.7	\$10.5	\$3.7	\$0.2	\$30.1
DRI	\$2.5	\$2.1	\$2.0	\$3.3	\$3.4	\$13.1
Ohio River Flood Protection	\$79.3	\$80.3	\$16.7	\$26.5	\$13.5	\$216.2
Stormwater Quality (MS4)	\$1.7	\$2.3	\$2.6	\$2.4	\$2.3	\$11.2
<b>Support Systems</b>	\$34.8	\$26.4	\$19.6	\$16.8	\$21.3	\$119.0
Capital Equipment	\$8.0	\$9.2	\$8.8	\$10.0	\$8.6	\$44.4
CMOM	\$0.1	\$0.0	\$0.0	\$0.0	\$0.0	\$0.1
Engineering Support	\$5.0	\$3.7	\$3.3	\$2.9	\$2.9	\$17.7
Facilities	\$17.2	\$7.8	\$3.0	\$1.2	\$8.0	\$37.2
IT	\$3.7	\$4.9	\$3.6	\$1.8	\$0.8	\$14.7
LOJIC	\$0.4	\$0.4	\$0.4	\$0.4	\$0.4	\$1.9
PSC Support	\$0.5	\$0.6	\$0.6	\$0.7	\$0.7	\$3.0
<b>Oldham County</b>	\$2.6	\$4.7	\$5.9	\$6.7	\$4.3	\$24.1
<b>Bulitt County</b>	\$7.3	\$12.1	\$20.4	\$2.6	\$5.4	\$47.8
<b>Management Reserve</b>	\$5.0	\$0.0	\$0.5	\$6.1	\$15.5	\$27.2
<b>Grand Total</b>	<b>\$306.1</b>	<b>\$317.8</b>	<b>\$227.6</b>	<b>\$209.8</b>	<b>\$214.4</b>	<b>\$1275.7</b>

# Supplier Diversity MBE/WBE Program

## Professional Services & Goods & Services

### Professional Services Contracts

- Engineer's Estimate **\$100K** and greater
- 15% MBE Goal (aspirational participation goal)
- 6% WBE Goal (aspirational participation goal)

### Goods & Services - Annual goals - 5% MBE & 3% WBE

- (Chemicals, Inventory Supplies, Custodial, Mowing, HVAC, Electrical, etc.)
  - Subcontracting is not required
- MSD seeks M/WBEs to bid as prime
- Award based on lowest price or highest evaluated bid
- Bid discount applicable



# MBE and WBE Certification Recognition



HUMAN RELATIONS  
COMMISSION



Desk Review & Site Visit



8(a) –  
Certification  
only



MSD does not accept DBE certification

<http://louisvillemsd.org/SupplierDiversity>



MINORITY & WOMEN BUSINESS  
ENTERPRISE CERTIFICATION PROGRAM  
Desk Review & Site Visit



# Small Business Enterprise (SBE) Program

- Race- and gender-neutral initiatives for small local businesses.
  - Various projects ranging from \$40,000 - \$200,000
  - Expenditures to date \$3.3M
- SBE Program Eligibility Requirements
  - Significant Local Presence (MSD Service areas)
  - Minimum one year in business
  - Annual gross revenue shall not exceed an average of \$10M over three-year period
- <https://louisvillemasd.org/doingbusiness>

# Contact MSD



<https://louisvillemtd.org/doingbusiness>

## Procurement:

John Allen

Procurement Manager

Phone: 502.540.6243

Email: [john.allen@louisvillemtd.org](mailto:john.allen@louisvillemtd.org)

## Supplier Diversity:

Joy L. Walker

Supplier Diversity Manager

Phone: 502.540.6503

Email: [joy.walker@louisvillemtd.org](mailto:joy.walker@louisvillemtd.org)

“Doing Business with MSD”

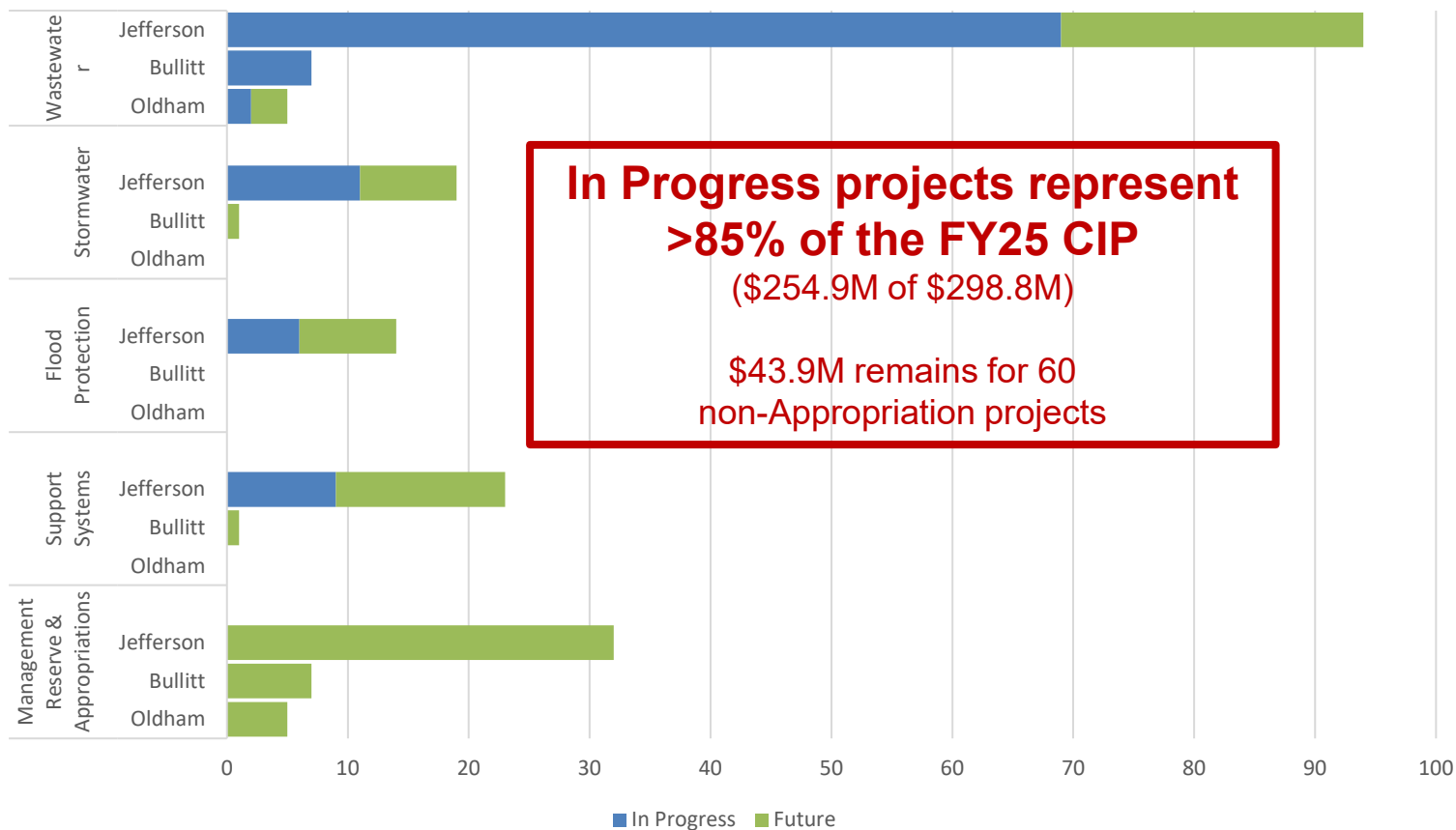
Held 4<sup>th</sup> Wednesday bi-monthly 9:00 – 10:30 a.m.

Register: [John.allen@louisvillemtd.org](mailto:John.allen@louisvillemtd.org)

**John Loechle**  
**MSD Engineering**  
**Technical Services**  
**Director**



# FY25 CIP includes 208 Active Projects

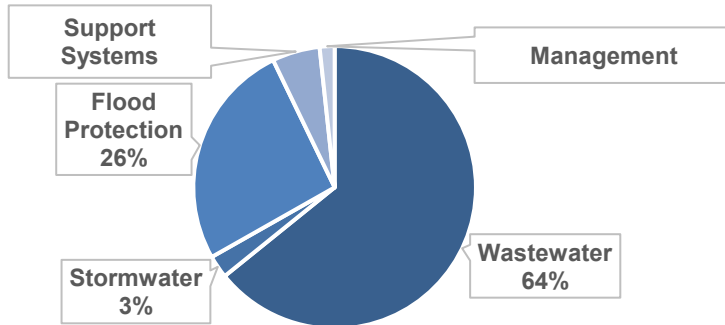




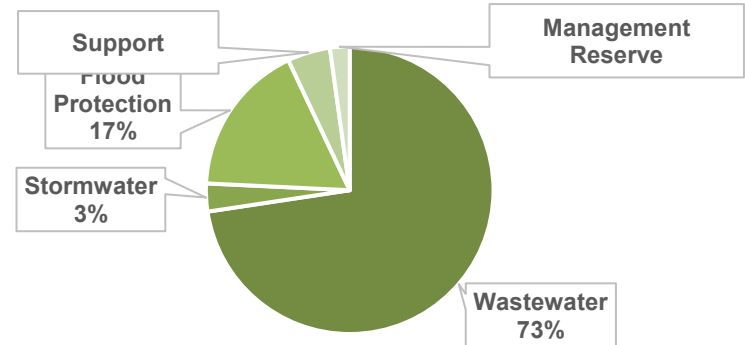
# 5-Year CIP Overview

Service Type	FY25	FY26	FY27	FY28	FY29	5-year Total
Wastewater	\$191,831,000	\$213,540,000	\$186,561,000	\$157,164,000	\$161,742,800	\$910,838,800
Stormwater	\$7,787,000	\$7,470,000	\$9,198,000	\$9,041,000	\$5,892,000	\$39,388,000
Flood Protection	\$77,798,000	\$74,481,000	\$17,661,000	\$28,792,000	\$17,349,000	\$216,081,000
Support Systems	\$16,315,000	\$14,595,000	\$12,265,000	\$8,035,000	\$9,099,000	\$60,309,000
Management Reserve	\$5,100,000	\$101,000	\$627,000	\$6,233,000	\$15,621,200	\$27,682,200
<b>Grand Total</b>	<b>\$298,831,000</b>	<b>\$310,187,000</b>	<b>\$226,312,000</b>	<b>\$209,265,000</b>	<b>\$209,704,000</b>	<b>\$1,254,299,000</b>

FY25 CIP by Service Type



5-year CIP by Service Type



# In Summary....

## 2025 and 2026 Budgets are Incumbered

FY25 Budget = \$299M

- Existing Projects Account for 85%
- Paddys Run Replacement and MFWQTC Bio-Solids - \$580M
- Assigned Regulatory Projects Approx: \$264M or 88%
- Deferred, Interrupted, On Hold = \$3M, 5 projects

Fy26 Budget Ceiling = \$310M

- Assigned Regulatory Projects Approx: \$278M or 90%
- FY26 Projections = \$346M, 12% over
- In Progress = \$311M, 90 Projects Continuing into FY26
- Future = \$32M, 63 New Projects are Needed

**SLIDE 1**

# Projects Schedule to Advertise

## First Quarter 2025

Note: “Preliminary Estimates” listed in the following are based on initial planning, and are not the final engineer’s estimate.  
Bidding schedules may also change based on available budget.

- South Shelby St Sanitary Sewer Improvements - \$170,000
- Taylor-Berry Catch Basin Replacement - \$990,000
- BC Lower Mud Lane Interceptor - \$3.5M
- CCWQTC Solids Dewatering Facility - \$22.7M

**SLIDE 1**

# Projects Scheduled to Advertise

## First Quarter 2025 (con't)

- Floydsburg Road I&I Rehabilitation - \$50,000
- Muddy Fork PS Roof Replacement - \$170,000
- FFWQTC Influent Pump VFDs - \$650,000
- Chickasaw Trap Catch Basin Rehab - \$330,000
- FFWQTC Sludge Storage Tank Improvements - \$5.0M
- Floodgate 33 Replacement - \$600,000
- 10 DRI Projects ranging from \$30,000 - \$650,000

**SLIDE 2**

# Projects Scheduled to Advertise

## Second Quarter 2025

- FPS Roof Repairs - 4th, 10th, Bingham, Starkey, Beargrass - \$200,000
- FPS Roof Repairs - 17th, 27th, 34th - \$220,000
- Starkey FPS Electrical Service Improvements - \$1.7M
- Olde Copper Ct PS Elimination - \$260,000
- Ohio River Service Area Lift Station Rehabilitation - \$1.9M
- Kirby Lane Pump Station Elimination - \$760,000

**SLIDE 3**



# Projects Scheduled to Advertise

## Second Quarter 2025 (con't)

- Upper Mill Creek FPS Transformer Replacement - \$3.4M
- Goose Creek Interceptor Rehabilitation - \$5.2M
- Fairmount Road Pump Station Force Main Extension - Phase 2 - \$6.6M
- Fox Harbor 1 & 2 and Deep Trail Pump Station Eliminations - \$1.1M
- Kavanaugh Road PS Elimination (OC) – \$7.6M
- Cedar Creek Interceptor Rehabilitation - \$5.6M

SLIDE 3

# Projects Scheduled to Advertise Second Quarter 2025 (con't)

- HCWQTC Sludge Screens - \$4.7M
- MFWQTC DAFT Rehabilitation - \$15.4M
- Bells Lane Odor Mitigation - EQ and HRT - \$8.5M
- 14 DRI Projects ranging from \$30,000 – \$200,000

SLIDE 3

# Projects Scheduled to Advertise

## Third Quarter 2025

- SGC RTC Enhancements - \$6.1M
- Canal Station Floodwall - \$5.6M
- Middletown Station PS Elimination - \$570,000
- Francell Court PS Elimination - \$3.3M
- Gunpowder PS Elimination - \$7.4M
- DRGWQTC Process Water Pump Filter System - \$660,000

SLIDE 4

# Projects Scheduled to Advertise

## Third Quarter 2025 (con't)

- MFWQTC Chlorine Contact Tanks and FEPS Structural Repairs – \$6.0M
- CCWQTC Sludge Storage Blower Upgrade - \$650,000
- Bells Lane Wet Weather Treatment Facility Peracetic Acid Chemical Feed System Rehabilitation - \$800,000
- 14 DRI Projects ranging from \$30,000 - \$400,000
- 4 Floodwall and Levee projects ranging from \$100,000 – \$800,000

SLIDE 4

# Projects Scheduled to Advertise

## Fourth Quarter 2025

- North Galt Ave Sewer Replacement - \$650,000
- MFWQTC Lab HVAC Upgrades - \$690,000
- Inflatable Dam Replacement - SWOR2, MDS, Sneads Branch - \$330,000
- Parkwood PS Elimination – \$600,000
- FFWQTC Office HVAC Replacement - \$60,000
- 10 DRI Projects ranging from \$30,000 - \$200,000

**SLIDE 6**



# Projected Design Starts 2025 (Based on Approved FY25 Budget)

- Bardstown Road PS (Q1)
- Buckner PS Upgrades (Q1)
- Central Relief Drain Sewer Separation (Q2)
- Inflatable Dam Replacement - SWOR2, MDS, Sneads Branch (Q2)
- Upper Middle Fork PS, FM and Int - Design-Build (Q3)

SLIDE 6



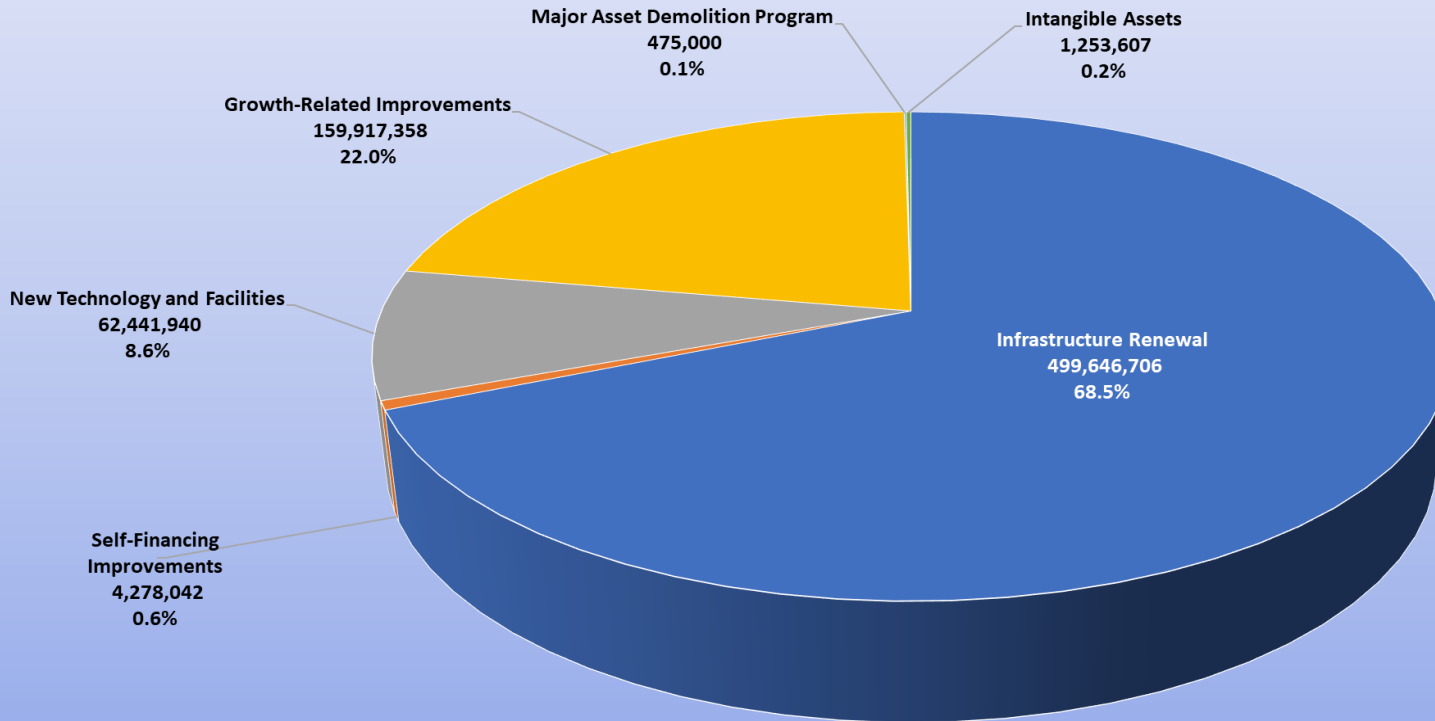
# Five Year (2025-2029) Capital Improvement Plan and Upcoming Construction Project Overview



# 2025-2029 CIP – Spending by Category



2025-2029 Capital Improvement Plan less Grants and Cash Reimbursements  
Total Louisville Water Cost: \$728,012,653



# Five-Year Capital Improvement Plan



## Focus

- “Generational” Plant/Production Investments
  - Crescent Hill Pump Station Discharge System Improvements
  - B.E. Payne Water Treatment Plant Upgrade
  - Crescent Hill Water Treatment Plant – Residuals Conveyance System
  
- Investment to support regional partnerships
  - Hardin County Water District #2
  - North Nelson Water District/City of Bardstown

# 2025 Capital Plan

## Capital Budget Highlights (\$ in Millions)

Infrastructure Renewal	2025 Budget
CHWTP - Redundant Residual Conveyance System	\$26.5
CHPS - Discharge System Improvements	\$23.5
Main Replacement and Rehabilitation Program (MRRP) Kentucky, Oak, Glenmary	\$18.6
Transmission Main Rehab 2019	\$7.8
CHFP - Reservoir Liner Replacement/Residual Removal	\$6.2

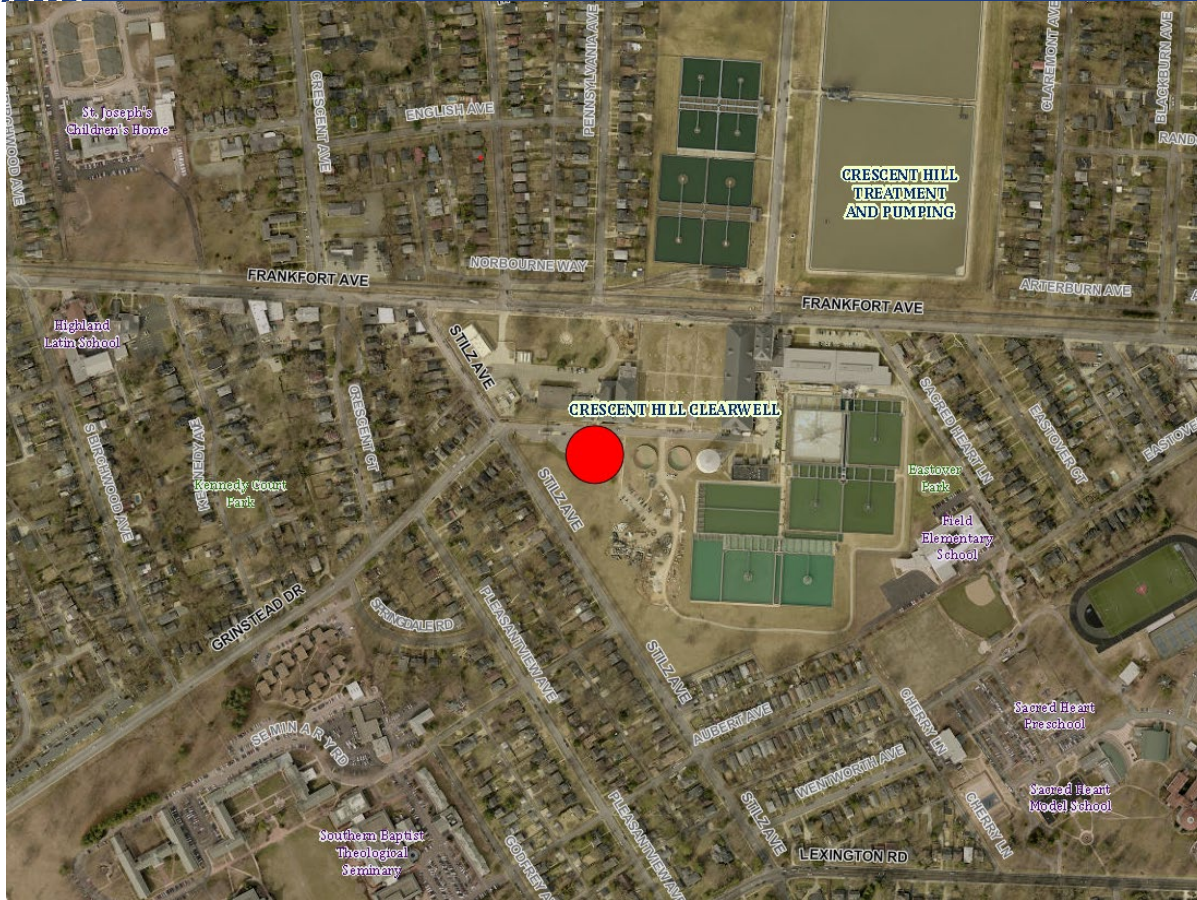


# Project Overview – Residual Line





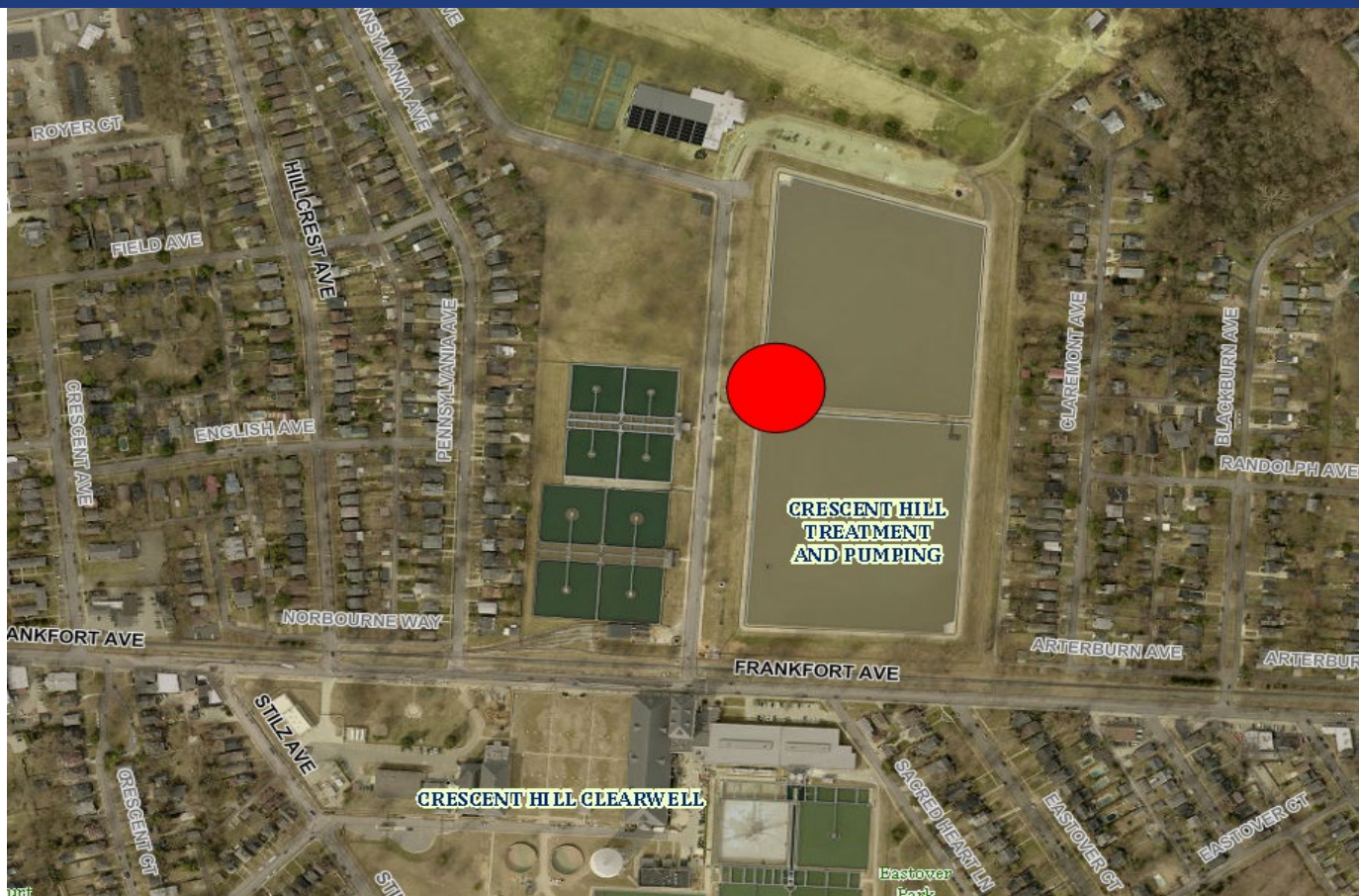
# Project Overview – CHPS Discharge System Improvements



# Project Overview – Crescent Hill Reservoir Clean/Lining



Louisville Water





# 2025 Capital Plan

## Capital Budget Highlights (\$ in Millions)

Growth-Related Improvements	2025 Budget
690 Plan N Nelson Water Dist Hwy 245 and Master Meter	\$9.1
690 Plan Transmission Salt River to Chapeze Booster Pump Station	\$8.4
690 Plan HCWD 2 Ph1 Wilson Crk	\$8.2
690 Plan Transmission Clermont Tank to Belmont Booster Pump Station	\$7.4
860 PZ 2nd Elevated Tank	\$7.0



# 2025 Capital Budget

## Capital Budget Highlights (\$ in Millions)

New Technology and Facilities	2025 Budget
HRMS Cloud Implementation	\$2.8
Westport Road Transfer Station - Standby Generator	\$2.5
Customer Portal Replacement	\$1.9
Metering - AMI for Jefferson County	\$1.8
Mitchell Hill Area Improvements - Mitchell Hill/Keys Ferry Pump Station	\$1.6



# 2025 Capital Plan

## Capital Budget Highlights (\$ in Millions)

Self-Financing Improvements	2025 Budget
New Services	\$6.3
Cleaner Water Program - Unserved Areas	\$1.5
Distribution Extensions	\$1.2



Thank You!



Please visit our table for more information on bidding, contractor prequalification, and Small Business Equity Program <sup>®</sup>



# Thank You for Attending Can You Dig it 2025

