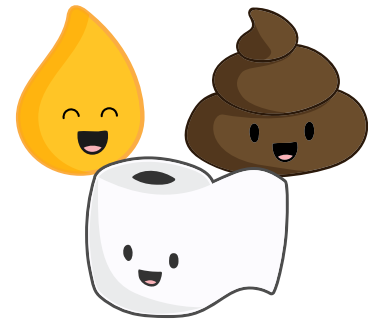


You can make a difference in the health of our streams.

Only Flush The 3 Ps

There are serious consequences when items that should not be flushed through plumbing end up at MSD Water Quality Treatment Centers.



Drains Are Only For Water

Don't pour fats, oils, grease, paint, petroleum products or medications into a catch basin, storm drain or a drain in your house. These can make fish sick and cause clogs in the pipes.



Don't Flush Wet Wipes

So-called "flushable wipes" do not break down properly in the sewer system. These wipes may clog sewer pipes and damage sewer line pumps.



Clean Up After Your Pet

Dispose of pet waste in the trash so that it isn't washed down storm drains or into streams. Dogs in Jefferson County produce four dump-truck loads of waste every day.



Pick Up Litter

Pick up litter or participate in a stream cleanup to help prevent trash from entering waterways.



Soak Up Extra Rainwater

Plant a tree, construct a rain garden, or replace your downspout with a rain barrel garden to help absorb stormwater.



Louisville's Rainwater Flood Protection System

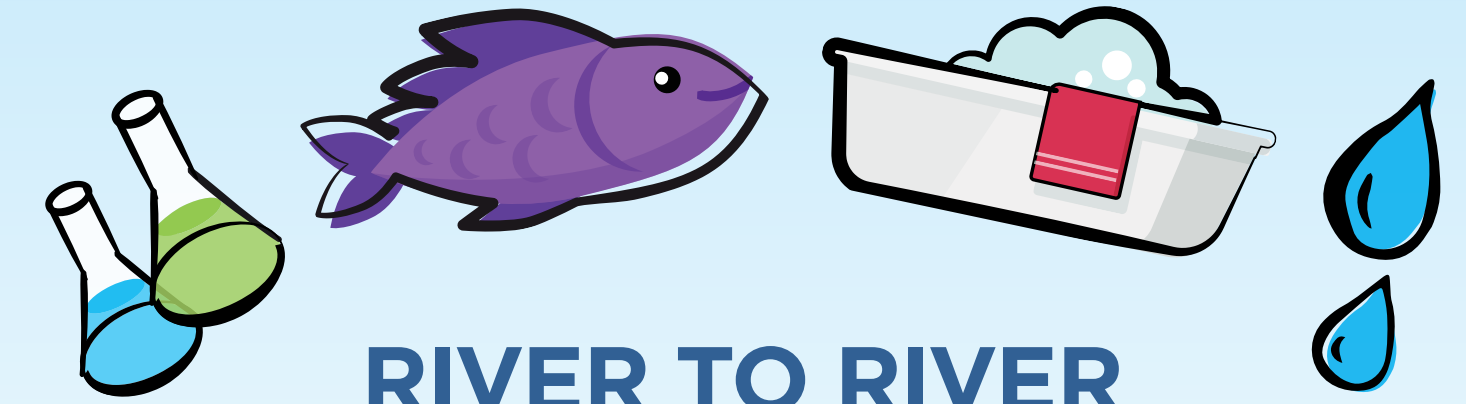
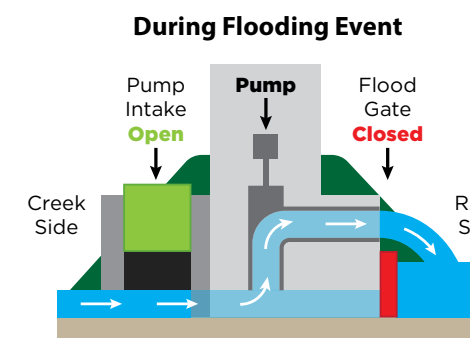
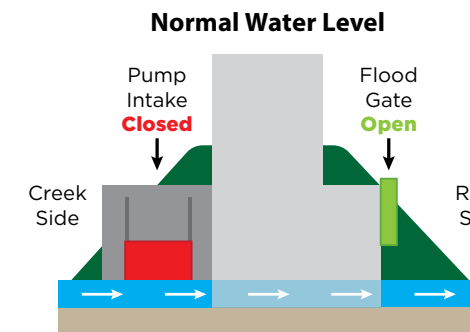
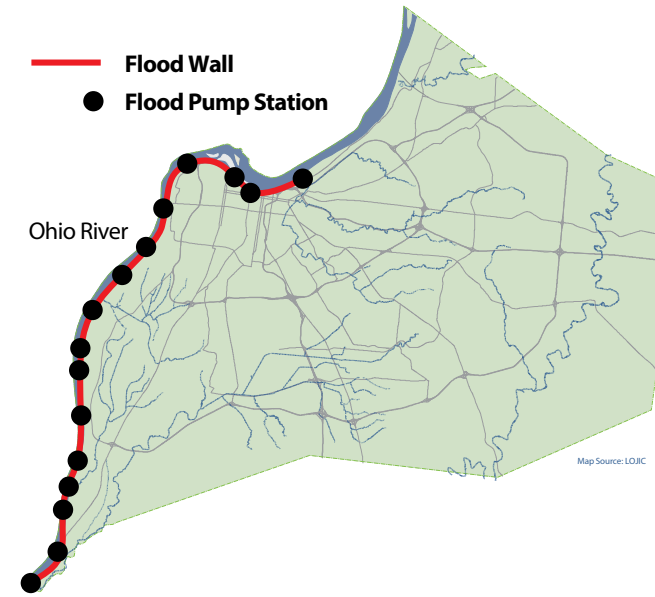
The Last Line Of Defense

Louisville Metro's Ohio River Flood Protection System exists to keep the river at bay and out of the city. The system protects more than 200,000 people, 87,000 homes and \$34 billion in property over 110 square miles. It includes 26.1 miles of floodwall and earthen levee, 16 flood pumping stations, nearly 150 floodgates and 79 floodwall closures.

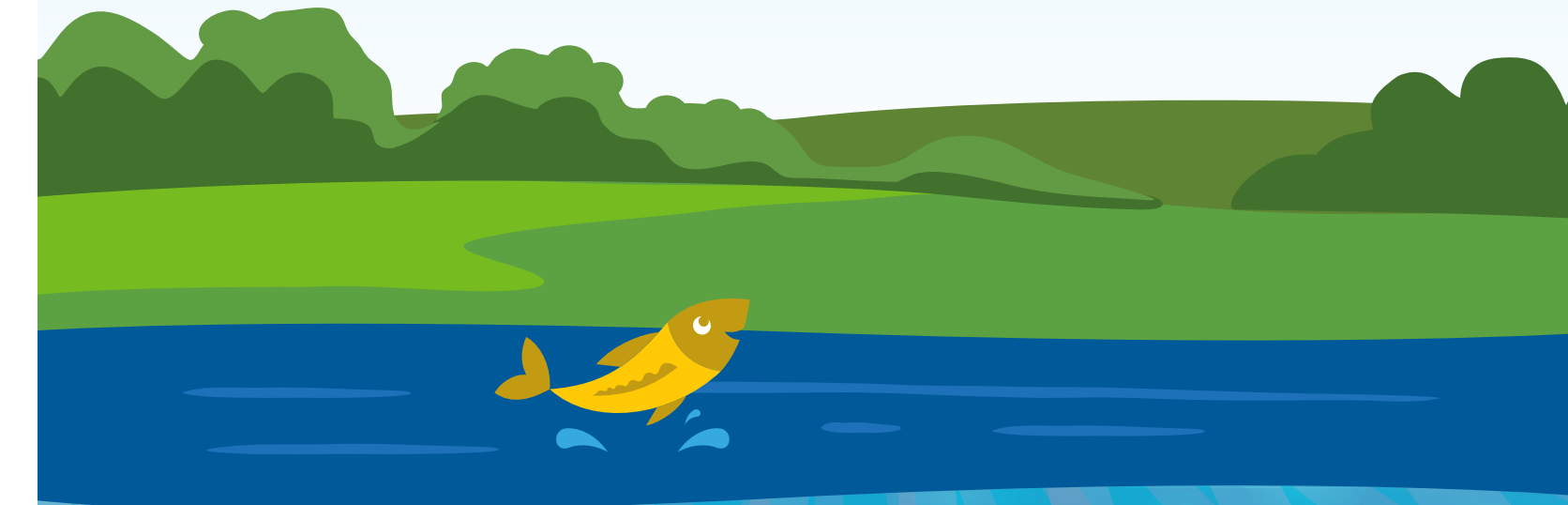
How Do Flood Pump Stations Work?

During times of high water on the Ohio River, the openings in the floodwall are sealed to keep the river water from backing up along our streams. Since the streams are always flowing, pumps are used to push water from the interior of the floodwall out into the river. During rain events, the pumps need to work even harder to make sure the area inside the floodwalls do not flood.

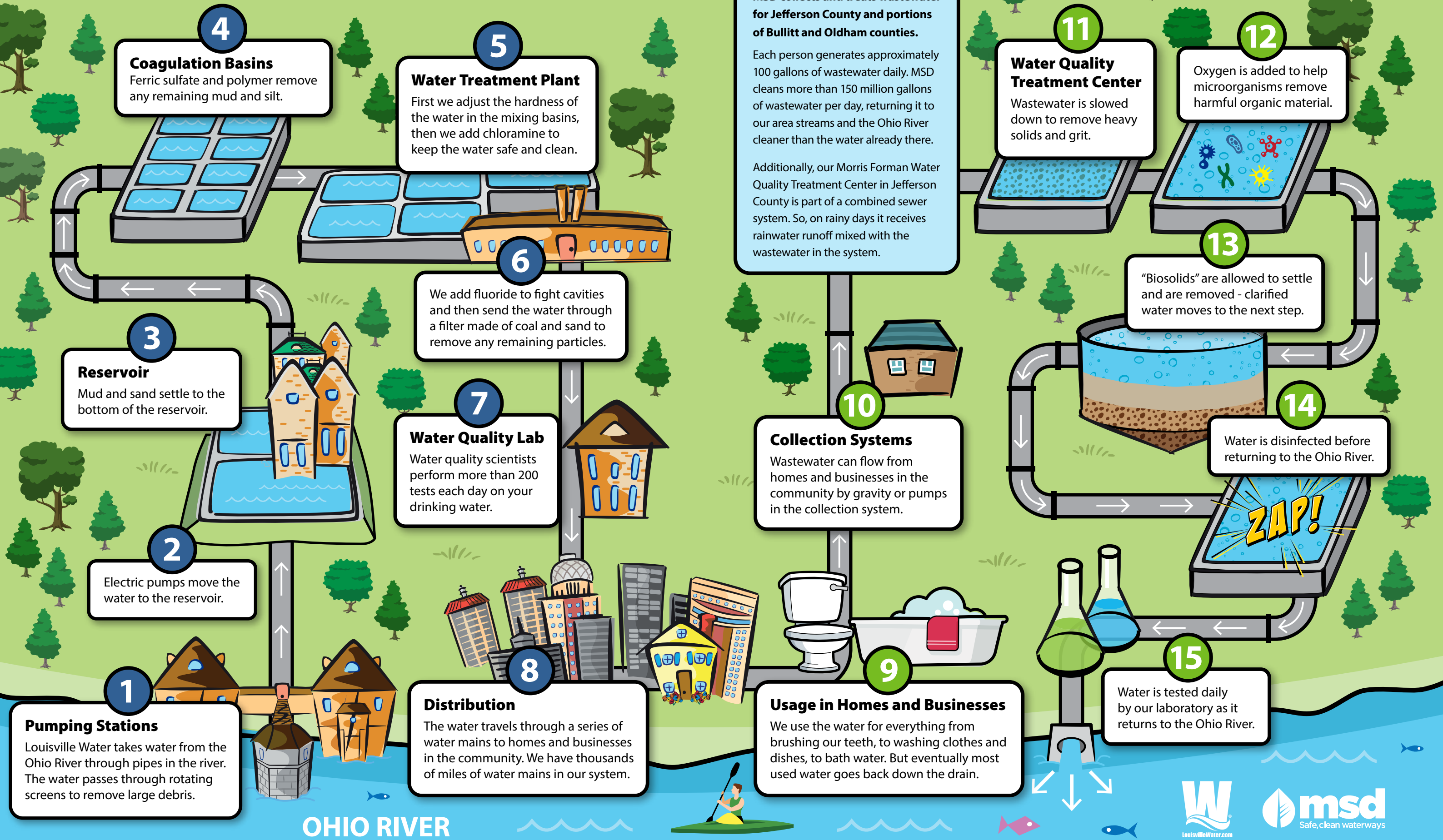
The flood pumps are only used when the Ohio River is high. When river levels are normal, streams flow to the river through gravity and no pumps are needed.



RIVER TO RIVER LOUISVILLE'S WATER CYCLE



LOUISVILLE'S WATER CYCLE



Stormwater Runoff and Watersheds

Polluted Stormwater

Our community is part of a watershed, where stormwater or rainwater flows over rooftops, lawns, parking lots and roadways. This water collects soil and pollutants—like lawn chemicals, animal waste and oil—harming our waterways.

Trash and sediment can pollute the water in creeks and lakes, making it difficult for aquatic plants to grow. Excess nutrients from lawn chemicals can harm aquatic life, as well as the animals that eat fish and aquatic plants. Bacteria and other pathogens can flow into streams, which can make people and animals sick.

wa-ter-shed

noun
1. an area of land that drains to its lowest point.

