

STREAMLINE

News and Events at Louisville MSD · First Quarter 2020



Local waterways such as Floyds Fork and their tributaries meander through several counties as they make their way to the Ohio River.

Regionalization enhances wastewater treatment and benefits our communities

The Kentucky State Legislature passed a bill allowing utilities to own assets outside of their originally chartered borders in April 2018. The law enables MSD to take a holistic approach for wastewater treatment and watershed management, benefiting public health and safety across political boundaries.

Our regional waterways meander over county lines as they make their way to the Ohio River. “Opportunities open up to look holistically across entire watersheds to bring economies of scale and make improvements that benefit the entire region when you remove arbitrary boundaries,” states MSD Executive Director Tony Parrott.

City of Crestwood

In May 2019, the City of Crestwood leadership and MSD negotiated the purchase agreement for MSD to own the sewer treatment system in that city—resulting in a \$10 reduction in rates for Crestwood customers. MSD has operated and maintained the Crestwood sewer system for more than 20 years. The agreement simply moved ownership of the system to MSD.

“Selling the wastewater system to MSD allows Crestwood to remove liability, lower the costs to ratepayers, and provide enhanced environmental benefits to the region—resulting in safe, clean waterways for the future,” said Crestwood Mayor Jim Kramer.

Oldham County

Louisville MSD will welcome Oldham County Environmental Authority (OCEA) ratepayers to our customer family in Summer 2020. For OCEA customers, the purchase means lower wastewater rates in the future. MSD will manage system improvements while creating greater operational efficiencies that benefit all of its customers.

Louisville MSD and Oldham County Fiscal Court approved an interlocal agreement allowing MSD to enter into a purchase agreement for the Oldham County Environmental Authority (OCEA) wastewater system in November 2019. The Authority’s Board of Directors, the office of the Kentucky Attorney General, and the Kentucky Department of Local Government also approved the purchase.

Under the agreement, MSD will assume OCEA’s duties and responsibilities for approximately 6,000 residential customers. MSD will honor the contract already in place with Veolia Water to operate and maintain the sewer system and wastewater treatment plants until the contract concludes.

Because of efficiencies and watershed-based approaches, OCEA customer rates will freeze at the current monthly average of \$86.93 per month for the remainder of the operations contract. In 2022, MSD will adjust the average monthly rate down to \$76.93 per month.

These acquisitions do not impact existing services or rates for Jefferson County MSD customers.

These acquisitions do not impact existing services or rates for Jefferson County MSD customers.



OUR VISION

The innovative regional utility for safe, clean waterways

CUSTOMER RELATIONS

502.540.6000 · CustomerRelations@LouisvilleMSD.org





Bumblebee is more than halfway home

MSD's tunnel boring continues to move 200-feet below Louisville

Bumblebee—MSD's Waterway Protection Tunnel boring machine—has passed the halfway mark in carving the 4-mile tunnel through bedrock eighteen stories under Louisville. Nicknamed "Bumblebee" in honor of Muhammad Ali, the 412-foot long machine is currently under the area of East Washington and Buchanan streets heading southeast to Lexington Road and Grinstead Drive.

How does Bumblebee work?

As the boring machine excavates the tunnel route, crews install locomotive tracks behind the machine to transport workers and supplies. A conveyor system transports the excavated rock through the tunnel to the working shaft. There it rides a vertical conveyor to the surface. The rock is then loaded into dump trucks and transported to a local quarry.

After the excavation is complete, the entire length of the tunnel is lined in concrete, making it watertight. The Waterway Protection Tunnel will store up to 55 million gallons of combined wastewater and stormwater during periods of heavy rain until capacity is available in the MSD sewer system. The contents are then pumped back into the system, conveyed to MSD's Morris Forman Water Quality Treatment Center for proper treatment, and later released into the Ohio River.



Workers board a metal basket and are lowered into the tunnel by a crane operator.



The path for the tunnel is shown in red. The boring machine—nicknamed Bumblebee—is moving from west to east.



A small train inside the tunnel delivers crews to their worksite.

Interested in learning more? Visit our exhibit at the Kentucky Science Center ...or visit LouisvilleMSD.org/Tunnel



Providing Strategic Partnerships for Positive Social Impacts



Employees of MSD contractor Stantec give their time planting trees in the Schnitzelburg and Meriwether neighborhoods in February.

MSD Community Benefits Program encourages firms working for MSD to invest in the community through a variety of ways, including workforce development, education and economic development. These programs can support job and contracting opportunities for residents, as well as our firms; expand pre-apprentice and apprenticeship programs; support eco-literacy programs for youth; provide small business

development growth, and so much more. Community Benefits Commitments may be a financial contribution, volunteer hours, or in-kind services to local non-profits and schools.

“MSD’s goal is to leverage our ongoing work in the community, ensuring that communities within our service area benefit from our investments in a variety of ways.”
— MSD Community Benefits Director Sharise Horne

Make plans now!
Ohio River Sweep
Saturday, June 20 · 9 AM to Noon

Ohio River Sweep is one of the nation’s largest and longest-running environmental cleanup events. MSD employees will equip volunteers with gloves and bags.
LouisvilleMSD.org/OhioRiverSweep

Customer **Compliments**

Please pass along my appreciation to **Johnny Caudill** and **Ricky Tobin** for their timeliness and work ethic as they responded to my service request for cleaning a catch basin near my home.
 — Raymond Hall

Thank you to MSD for supporting our February 14 clean-up of tree debris in Shawnee Park. The crews willingness to help and positive attitudes had a huge impact on the event and made it a success.
 Thanks again to MSD Business and Community Partnership Administrator **Saundra Gibson** who coordinated the effort with Supervisor **Val Winburn** and his crew of **William Baskette** and **Keith Brooks**.
 — Sincerely, Councilwoman Purvis

Daniel Ashley, Patrick Beasley and **Roderick Harris** were very professional as they repaired the service connection near my property. I appreciate how they kept me informed with the entire process. I thank you for a job well done.
 — Michael Reilly



700 West Liberty Street
Louisville, KY 40203-1911



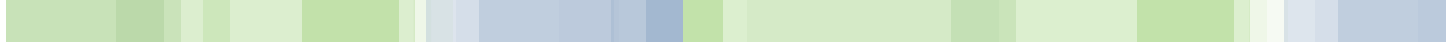
Streamline is a publication of Louisville MSD.
© COPYRIGHT 2020
LOJIC map data copyrighted by the Louisville and Jefferson County Metropolitan Sewer District, Louisville Water Company, Louisville Metro Government and Jefferson County Property Valuation Administrator. All rights reserved.

Editor:
Sheryl Lauder
Communications Program Manager
Sheryl.Lauder@LouisvilleMSD.org

Contributors:
Harold Adams
Communications and Marketing Supervisor

Chad Williamson
Communications Specialist

The public is welcome to attend MSD Board meetings.
For MSD Board information and meeting schedule visit:
LouisvilleMSD.org/About-Us/MSD-Board



Upcoming Events

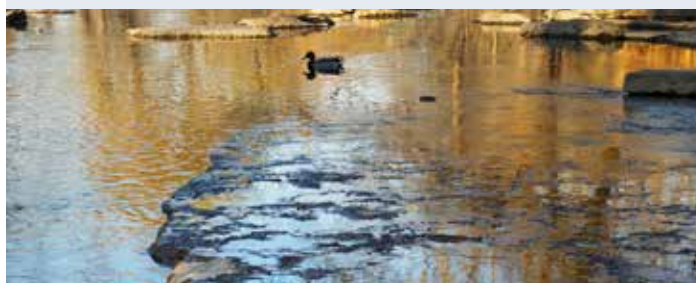
MARCH 23
MSD Board Personnel Committee Meeting
10 AM, 700 West Liberty Street

MSD Board Meeting
1 PM, Open Session, 700 West Liberty Street

APRIL 20
MSD Board Audit Committee Meeting
4 PM, 700 West Liberty Street

APRIL 22
MSD Board joint Infrastructure and Finance Committees Meeting
3 PM, 700 West Liberty Street

APRIL 27
MSD Board Meeting
1 PM, Open Session, 700 West Liberty Street



Beargrass Creek — Photo courtesy of John Nation



Plan your rain garden now

Rain gardens help infiltrate rainwater before it reaches the drainage system, and reduce the amount of stormwater and pollutants running into storm drains, combined sewers or streams.

For your **FREE Rain Garden Guide**, look online at LouisvilleMSD.org/Green or contact MSD Customer Relations at **502.540.6000** or CustomerRelations@LouisvilleMSD.org.