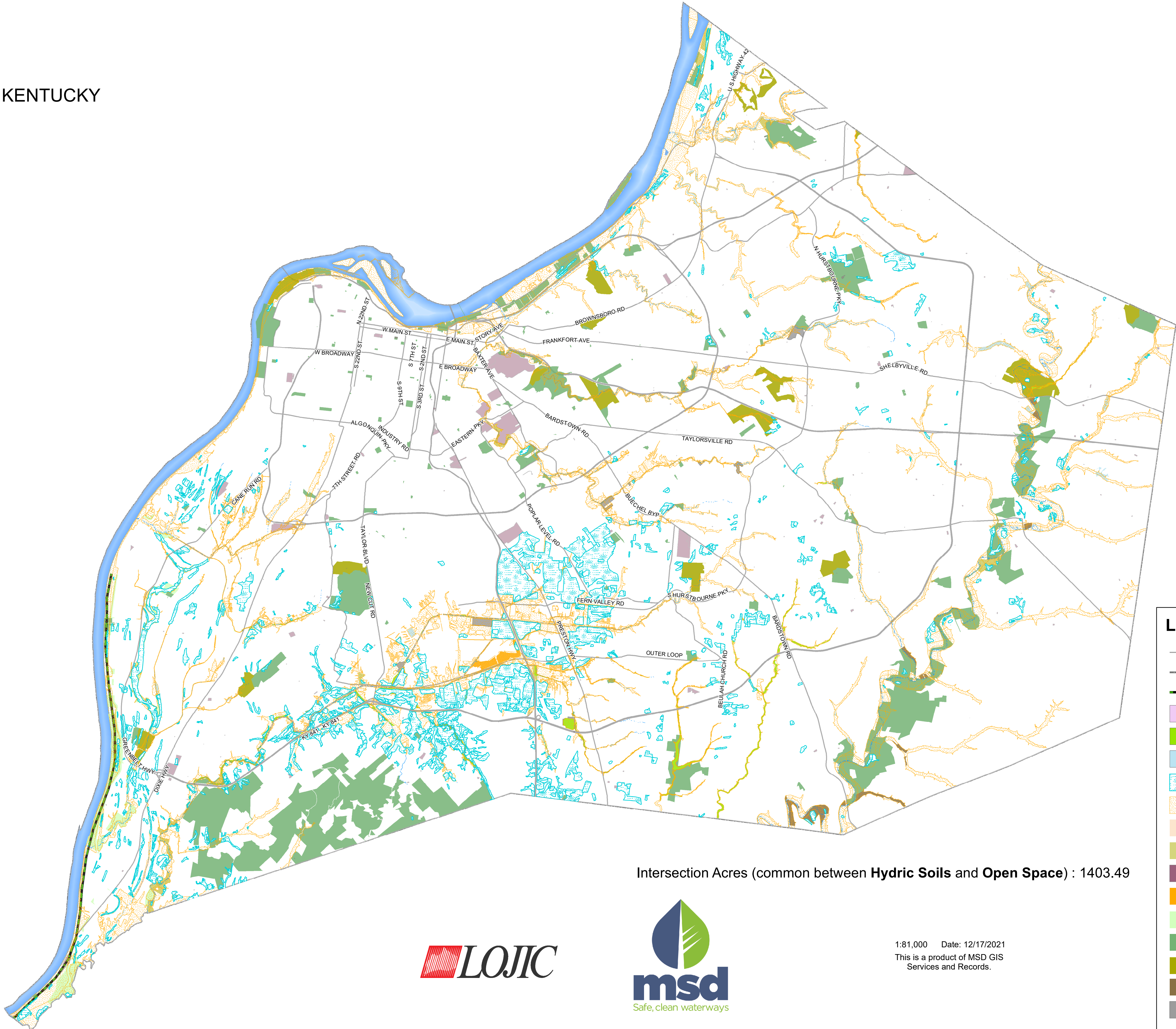
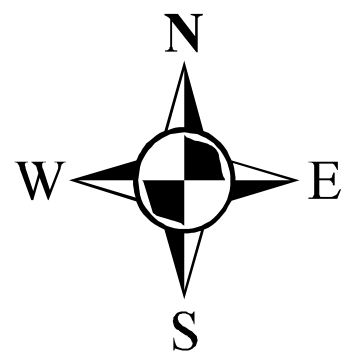


HS-1

HYDRIC SOILS MAP

JEFFERSON COUNTY, KENTUCKY



Legend

Major Road

Jefferson County Boundary

Greenway

MSD Easements

Conveyance Zone W/O Structures

Subdivision Open Space

Potential Wetlands (Hydric Soil)

100 Year Floodplain

Floodplain Acquisitions

Private Properties with Easements

Cemeteries

Waste Management Wetlands

Community Improvement District (CID)

Parks

Golf Courses

Future Fund & 21st Century Parks

Regional Basins

Intersection Acres (common between **Hydric Soils** and **Open Space**) : 1403.49



1:81,000    Date: 12/17/2021  
This is a product of MSD GIS  
Services and Records.

Copyright © Date: 2021, LOUISVILLE AND JEFFERSON COUNTY METROPOLITAN SEWER DISTRICT (MSD), LOUISVILLE WATER COMPANY (LWC), LOUISVILLE METRO GOVERNMENT, and JEFFERSON COUNTY PROPERTY VALUATION ADMINISTRATOR (PVA).  
All Rights Reserved.  
Louisville/Jefferson County Information Consortium (LOJIC), a Jefferson County, Kentucky, based cooperative project of: Louisville/Jefferson Metro Government Louisville Water Company Metropolitan Sewer District Property Valuation Administrator  
No part of this map may be reproduced or transmitted in any form or by any means, electronic or mechanical, including photocopying and recording, or by any information storage or retrieval system, except as expressly permitted in writing by MSD.

\\gis\_reco\proj\proj\_mxd\2021\_P\Projects\Waterhed Master Plan\MXD\Figure 13 Hydric Soil Open Space Map\_V2\_1.mxd